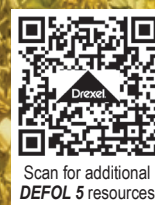




# Product Guide

*Improve Harvest Efficiency*

Visit us at [DrexChem.com](http://DrexChem.com)





# Table of Contents

|   |    |
|---|----|
| Product History and Information .....                   | 2  |
| Function, Benefits and Application Considerations ..... | 2  |
| Defol 5 Sales Sheet .....                               | 3  |
| Pre-Harvest Use Guide (All Crops) .....                 | 4  |
| Chili Peppers Technical Use Guide .....                 | 5  |
| Cotton Technical Use Guide .....                        | 6  |
| Dry Edible Bean Technical Use Guide .....               | 7  |
| Field Corn Technical Use Guide .....                    | 8  |
| Flax Technical Use Guide .....                          | 9  |
| Garbanzo Bean Technical Use Guide .....                 | 10 |
| Grain Sorghum Technical Use Guide .....                 | 11 |
| Rice Technical Use Guide .....                          | 12 |
| Safflower Technical Use Guide .....                     | 13 |
| Seed Corn Technical Use Guide .....                     | 14 |
| Soybean Technical Use Guide .....                       | 15 |
| Sunflower Technical Use Guide .....                     | 16 |
| Wheat Technical Use Guide .....                         | 17 |
| Production Facilities / Regional Warehouses .....       | 18 |



**Drexel**

**Providing Economical  
Solutions and Building  
Relationships  
Since 1972**





Drexel

**Defol<sup>®</sup> 5**

## Product History

- **Defol<sup>®</sup> 5** is the leading Sodium chlorate product marketed for the US ag market.
- First developed in the 1960's for Cotton defoliation
- Favorable ecological and toxicological profile
- Extensive registered use sites

## Product Functions and Benefits

- Moisture pulled from plant tissue via diffusion
- Reduces plant and grain moisture more rapidly than natural dry-down
- Improves harvest efficiency by increasing harvest speed
- Can be applied by Ground OR Air
- Application timing flexibility
- No PHI (except Sunflowers - 7 days; Wheat - 3 days)

## Application Considerations

- Coverage Is Key
- Heat and humidity is beneficial
- Delay applications if rainfall is expected within 24 hours

## Adjuvant Recommendations

- Non-Ionic Surfactant (minimum)
- High Surfactant Oil Concentrate

## Product Information

|                         |  |
|-------------------------|--|
| Active Ingredient       | Sodium Chlorate                                |
| Formulation Type        | SL (Soluble Liquid)                            |
| Re-Entry Interval (REI) | 12 hours                                       |
| Signal Word             | Caution  |
| Restricted Use (Y/N)    | N  |
| Package Sizes           | 2.5 gals., 30 gals., 55 gals., 265 gals., Bulk |
| Common Use Rate         | 4 to 4.8 qts. per ac.                          |
| Chemical Family         | Defoliant/Desiccant                            |
| EPA Reg. No.            | 19713-388                                      |

### ACTIVE INGREDIENT:

Sodium chlorate ..... 42.3%

OTHER INGREDIENTS: ..... 57.7%

TOTAL: ..... 100.0%

This product contains 5 pounds of Sodium chlorate per gallon.



Drexel

**Drexel Chemical Company**

Call 901.774.4370 or visit [DrexChem.com](http://DrexChem.com)  
to contact your regional sales representative.

# Defol<sup>®</sup> 5

**Defol<sup>®</sup> 5** is a harvest aid for improving harvest efficiency in a variety of Grain, Oilseed, Pulse and Vegetable crops.



## Features and Benefits

- Fast acting desiccant
- Can be applied by Ground OR Air
- Active defoliation at temperatures above 60°F
- Will desiccate trashy weeds, such as Morning glory, if applied before harvest
- Improves harvest efficiency by reducing harvest moisture more rapidly than natural dry-down

## Tank-Mix Partners

- Glyphosate (Duplicator<sup>®</sup> 6)
- Paraquat (Quik-Quat<sup>™</sup>\*)
- Saflufenacil (Sharpen<sup>®</sup>)

## Adjuvant Recommendations

### Oil Concentrates

- BeanOil<sup>®</sup> (0.5 pt. per ac.)
- Hot MES<sup>™</sup> (0.5 pt. per ac.)

### Surfactants

- Haf-Pynt<sup>™</sup> (0.5 pt. per 100 gals.)
- Sil-Fact<sup>®</sup> (12 fl. ozs. per 100 gals.)



Visit [www.DrexChem.com](http://www.DrexChem.com) for your Sales Representative, Labels and SDS.

BEANOIL, DEFOL, DUPLICATOR, HAF-PYNT, HOT MES, QUIK-QUAT, SIL-FACT and the DREXEL logo are either trademarks or registered trademarks of Drexel Chemical Company. All other brand names, product names or trademarks belong to their respective holders. \*RESTRICTED USE PESTICIDE. Always read and follow the label instructions on the product container(s) before using. For information about this or other Drexel products, visit [DrexChem.com](http://DrexChem.com).

|                                    |   |
|------------------------------------|---|
| <b>Active Ingredient</b>           | Sodium Chlorate                                     |
| <b>Formulation Type</b>            | SL (Soluble Liquid)                                 |
| <b>Re-Entry Interval (REI)</b>     | 12 hours  |
| <b>Signal Word</b>                 | Caution   |
| <b>Restricted Use (Y/N)</b>        | N   |
| <b>Package Sizes</b>               | 2.5 gals., 30 gals., 55 gals., 265 gals., Bulk      |
| <b>Common Use Rate</b>             | 4 to 4.8 qts. per ac.                               |
| <b>Pre-Harvest Interval (PHI):</b> | No PHI (except Sunflowers - 7 days; Wheat - 3 days) |
| <b>EPA Reg. No.</b>                | 19713-388   |

### ACTIVE INGREDIENT:

Sodium chlorate ..... 42.3%

**OTHER INGREDIENTS:** ..... 57.7%

**TOTAL:** ..... 100.0%

This product contains 5 pounds of Sodium chlorate per gallon.





Drexel

# Defol 5<sup>®</sup>

## Pre-Harvest Use Guide

| Crop          | Benefits  | Rate Per Acre (A.I./Ac.)                  | When To Apply  | Comments   |
|---------------|---|---|--|--|
| Chili Peppers | <b>Defol 5</b> is applied 7 to 10 days after Ethephon applications or when 50% of the pods are red to improve harvest efficiency and to improve ASTM color grade.   | 4 to 10 qts.<br>(6 to 12.5 lbs. a.i.)     | Two weeks prior to harvest or when 50% of the pods are red.<br><b>No PHI</b>   | <b>GPA:</b> Apply in 5 to 15 GPA AIR or 20 to 40 GPA GROUND.<br><b>ADJUVANT:</b> 1% v/v COC/MSO or 0.25% v/v NIS           |
| Corn          | <b>Defol 5</b> is applied to Corn to increase harvest efficiency by reducing moisture, improving threshing and harvest speeds allowing for earlier harvest.   | 4.8 qts.<br>(6 lbs. a.i.)                 | Five days prior to black layer (3/4 Milk).<br><b>No PHI</b>  | <b>GPA:</b> Apply in 5 to 7 GPA AIR or 10 to 20 GPA GROUND.<br><b>ADJUVANT:</b> 1% v/v COC/MSO or 0.25% v/v NIS            |
| Cotton        | <b>Defol 5</b> can be used both as a desiccant or defoliant, depending on timing and rate of applications. <b>Defol 5</b> is most effective as a "Second shot" in combination with Paraquat, Shark or ET to desiccate young leaves and control regrowth before harvest. | 2.4 to 3.6** qts.<br>(3 to 4.5 lbs. a.i.) | Do not tank-mix with Ethephon because this will result in the formation of hypochlorous acids, which upon heating emit toxic chlorine fumes. **Higher use rates when used for desiccation may stick leaves.<br><b>No PHI</b> | <b>GPA:</b> Apply in 5 to 10 GPA AIR or 10 to 20 GPA GROUND.<br><b>ADJUVANT:</b> 1% v/v COC/MSO or 0.25% v/v NIS.          |
| Dry Beans     | <b>Defol 5</b> is often applied to pulse crops to even up ripening, reduce moisture and improve harvest efficiency by improving threshing and increased harvest speeds.   | 4.8 qts.<br>(6 lbs. a.i.)                 | Prior to harvest when >80% yellow/ brown pods and <40% green Chickpea leaves or <30% green Lentil leaves.<br><b>No PHI</b>   | <b>GPA:</b> Apply in 5 to 7 GPA AIR or 10 to 20 GPA GROUND.<br><b>ADJUVANT:</b> 1% v/v COC/MSO or 0.25% v/v NIS            |
| Flax          | <b>Defol 5</b> is applied to Flax to even up ripening and improve harvest efficiency by improving threshing and increased harvest speeds.   | 4.8 qts.<br>(6 lbs. a.i.)                 | Prior to harvest when 70 to 80% of the bolls are brown.<br><b>No PHI</b>   | <b>GPA:</b> Apply in 5 to 10 GPA AIR or 10 to 20 GPA GROUND.<br><b>ADJUVANT:</b> 1% v/v COC/MSO or 0.25% v/v NIS           |
| Grain Sorghum | <b>Defol 5</b> is applied to Grain sorghum (Milo) to improve harvest efficiency by reducing moisture of primary and secondary growth (suckers), improve harvest efficiency by increased threshing, increased harvest speeds and earlier harvest.                        | 3.6 to 4.8 qts.<br>(4.5 to 6 lbs. a.i.)   | Apply when kernels at the bottom of the seed head reach black layer or physiological maturity.<br><b>No PHI</b>  | <b>GPA:</b> Apply in 4 to 10 GPA AIR or 10 to 20 GPA GROUND.<br><b>ADJUVANT:</b> 1% v/v COC/MSO or 0.25% v/v NIS           |
| Guar Beans    | <b>Defol 5</b> is often applied to pulse crops to even up ripening, reduce moisture, improve harvest efficiency by improving threshing and increased harvest speeds.  | 4.8 qts.<br>(6 lbs. a.i.)                 | Prior to harvest when targeted harvestable pods are fully mature. <b>No PHI</b>  | <b>GPA:</b> Apply in 5 to 10 GPA AIR or 10 to 20 GPA GROUND.<br><b>ADJUVANT:</b> 1% v/v COC/MSO or 0.25% v/v NIS           |
| Potatoes      | <b>Defol 5</b> can be used both as a vine desiccant and can be combined with other desiccants.  | 4.8 qts.<br>(6 lbs. a.i.)                 | Do not apply under conditions of extreme heat during the middle of the day.<br><b>No PHI</b>   | <b>GPA:</b> Apply in 5 to 10 GPA AIR or 10 to 20 GPA GROUND.<br><b>ADJUVANT:</b> 1% v/v COC/MSO or 0.25% v/v NIS.          |
| Rice          | <b>Defol 5</b> is applied to Rice even up ripening, reduce moisture and plant matter through harvest equipment, increase harvest speeds and efficiency and to improve milling quality.  | 3.6 to 4.8 qts.<br>(4.5 to 5 lbs. a.i.)   | Apply onto conventional Rice at 25% moisture or 23% moisture for hybrids.<br><b>No PHI</b>   | <b>GPA:</b> Apply in 5 to 10 GPA AIR or 10 to 20 GPA GROUND.<br><b>ADJUVANT:</b> 1% v/v COC/MSO or 0.25% v/v NIS.          |
| Safflower     | <b>Defol 5</b> is applied to Safflower to even up ripening and improve harvest efficiency by improving threshing and increased harvest speeds.  | 4.8 qts.<br>(6 lbs. a.i.)                 | Apply prior to harvest after physiological maturity.<br><b>No PHI</b>  | <b>GPA:</b> Apply in 5 to 10 GPA AIR or 20 to 30 GPA GROUND.<br><b>ADJUVANT:</b> 1% v/v COC/MSO or 0.25% v/v NIS.          |
| Southern Pea  | <b>Defol 5</b> is applied to Southern peas to terminate vegetative growth (indeterminant varieties), even up ripening, reduce moisture for improved threshing, increase harvest speeds and efficiency.  | 4.8 qts.<br>(6 lbs. a.i.)                 | Apply prior to harvest when 75% of the pods have turned color and the Peas in the remaining 25% should be firm.<br><b>No PHI</b>   | <b>GPA:</b> Apply in 5 to 10 GPA AIR or 10 to 20 GPA GROUND.<br><b>ADJUVANT:</b> 1% v/v COC/MSO or 0.25% v/v NIS.          |
| Soybeans      | <b>Defol 5</b> is applied to indeterminant Soybean varieties to terminate vegetative growth, even up ripening, reduce moisture for improved threshing, increase harvest speeds and efficiency.  | 4 to 4.8 qts.<br>(5 to 6 lbs. a.i.)       | R 6.5 - All normal pods on four uppermost nodes have pod cavities filled. Leaf senescence begins. Seed at 50% dry matter accumulated.<br><b>No PHI</b>   | <b>GPA:</b> Apply in a minimum of 5 GPA AIR or minimum 10 GPA GROUND.<br><b>ADJUVANT:</b> 1% v/v COC/MSO or 0.25% v/v NIS. |
| Sunflowers    | <b>Defol 5</b> is applied to Sunflower to increase harvest efficiency by reducing moisture, improving threshing and harvest speeds allowing for earlier harvest.  | 4 to 4.8 qts.<br>(5 to 6 lbs. a.i.)       | Apply prior to harvest when at the R9 growth stage when the backside of Sunflower heads yellow and bracts turning brown at the shoulder. Seed moisture content under 35%.<br><b>PHI - 7 Days</b>                             | <b>GPA:</b> Apply in 5 to 10 GPA AIR or 20 to 30 GPA GROUND.<br><b>ADJUVANT:</b> 1% v/v COC/MSO or 0.25% v/v NIS.          |
| Wheat         | <b>Defol 5</b> is applied to Wheat to improve harvest efficiency by reducing moisture of primary and secondary growth (suckers), increased harvest speeds and earlier harvest.  | 4.8 qts.<br>(6 lbs. a.i.)                 | Apply prior to harvest when Wheat is mature.<br><b>PHI - 3 Days</b>  | <b>GPA:</b> Apply in a minimum of 5 GPA AIR or minimum 10 GPA GROUND.<br><b>ADJUVANT:</b> 1% v/v COC/MSO or 0.25% v/v NIS. |



Drexel

Visit [www.DrexChem.com](http://www.DrexChem.com) for your Sales Representative, Labels and SDS.

PHI is an abbreviation of Pre-Harvest Interval. DEFOL and the DREXEL logo are registered trademarks of the Drexel Chemical Company. Always read and follow all label instructions on the product container before using.





Drexel.

# Chili Pepper

## Improve Harvest Efficiency with *Defol*<sup>®</sup> 5

### Product Benefits:

- Fast acting desiccant
- Can be applied by Ground OR Air
- Accelerates fruit drying
- Ideal harvest aid for wet or dry weather conditions
- No PHI

### Keys to Optimal Performance:

- Apply in temperatures >60°F
- Maximize coverage and canopy penetration

### Application Timing

2 weeks prior to harvest OR when 50% of the pods are red

### Application Rate

4.0 to 10.0 qts./Ac.

### Water Dilution

**Air:** 5 to 15 gals./Ac.  
**Ground:** 20 to 40 gals./Ac.

### Adjuvant & Rate

#### Oil Concentrates:

BeanOil<sup>®</sup>  
(0.5 pt./Ac.)

Hot MES<sup>™</sup>  
(0.5 pt./Ac.)

#### Surfactants:

Haf-Pynt<sup>™</sup>  
(0.5 pt./100 gals.)

Sil-Fact<sup>®</sup>  
(12 fl. ozs./100 gals.)

Drexel Chemical Company | (901) 774-4370 | E-mail: [info@drexchem.com](mailto:info@drexchem.com) | [www.DrexChem.com](http://www.DrexChem.com)

BEANOIL, DEFOL, HAF-PYNT, HOT MES, SIL-FACT and the DREXEL logo are either trademarks or registered trademarks of the Drexel Chemical Company. Always read and follow all label instructions on the product container before using.





Drexel

# Cotton

## Improve Harvest Efficiency with *Defol*<sup>®</sup> 5

### Product Benefits:

- Fast acting defoliant and desiccant
- Can be applied by Ground OR Air
- Effective in two pass defoliation programs
- Excellent tank-mix partner with Paraquat (*Quik-Quat*<sup>™\*</sup>), Carfentrazone (*SHARK*<sup>®</sup> EW HERBICIDE), Pyraflufen (ET) and other defoliants for desiccation of young leaves and regrowth control
- No PHI

### Keys to Optimal Performance:

- Apply in temperatures >60°F
- Maximize coverage and canopy penetration

| Application Timing  |
|---|
| 70% Open Bolls  |
| Application Rate  |
| 2.4 to 4.8 qts./Ac.   |
| Water Dilution  |
| <b>Air:</b> 5 to 10 gals./Ac.<br><b>Ground:</b> 10 to 20 gals./Ac.  |
| Adjuvant & Rate   |
| <b>Oil Concentrates:</b><br>BeanOil <sup>®</sup><br>(0.5 pt./Ac.)<br>Hot MES <sup>™</sup><br>(0.5 pt./Ac.)<br><b>Surfactants:</b><br>Haf-Pynt <sup>™</sup><br>(0.5 pt./100 gals.)<br>Sil-Fact <sup>®</sup><br>(12 fl. ozs./100 gals.) |

Drexel Chemical Company | (901) 774-4370 | E-mail: [info@drexchem.com](mailto:info@drexchem.com) | [www.DrexChem.com](http://www.DrexChem.com)

\* RESTRICTED USE PESTICIDE.

BEANOIL, DEFOL, HAF-PYNT, HOT MES, QUIK-QUAT, SIL-FACT and the DREXEL logo are either trademarks or registered trademarks of the Drexel Chemical Company. All other brand names, product names or trademarks belong to their respective holders. Always read and follow all label instructions on the product container before using.





Drexel.

# Dry Edible Bean

## Improve Harvest Efficiency with *Defol*<sup>®</sup> 5

### Product Benefits:

- Fast acting desiccant
- Can be applied by Ground OR Air
- Evens crop ripening
- Improves threshing
- Increases harvest speed
- Excellent tank-mix partner
- No PHI

### Keys to Optimal Performance:

- Apply in temperatures >60°F
- Maximize coverage and canopy penetration

### Application Timing

80% pod cover change,  
<40% green leaves (bush type) /  
<30% green leaves (vine type)

### Application Rate

4.8 qts./Ac.

### Water Dilution

**Air:** 5 to 7 gals./Ac.  
**Ground:** 10 to 20 gals./Ac.

### Adjuvant & Rate

#### Oil Concentrates:

BeanOil<sup>®</sup>  
(0.5 pt./Ac.)

Hot MES<sup>™</sup>  
(0.5 pt./Ac.)

#### Surfactants:

Haf-Pynt<sup>™</sup>  
(0.5 pt./100 gals.)

Sil-Fact<sup>®</sup>  
(12 fl. ozs./100 gals.)

Drexel Chemical Company | (901) 774-4370 | E-mail: [info@drexchem.com](mailto:info@drexchem.com) | [www.DrexChem.com](http://www.DrexChem.com)

BEANOIL, DEFOL, HAF-PYNT, HOT MES, SIL-FACT and the DREXEL logo are either trademarks or registered trademarks of the Drexel Chemical Company. Always read and follow all label instructions on the product container before using.



Drexel

# Field Corn

## Manage for Earlier Harvest with *Defol*<sup>®</sup> 5

### Product Benefits:

- Fast acting desiccant
- Can be applied by Ground OR Air
- Increase dry down by an additional 0.5 to 3 points per day
- Earlier harvest - 2 weeks or more (based on conditions)
- Reduced drying cost and weather risk
- Allows early cover crop planting, promoting better nutrient management
- No PHI

### Keys to Optimal Performance:

- Apply in temperatures above 60°F
- Apply with a crop oil or non-ionic surfactant

| Application Timing  | Adjuvant & Rate   |
|---|---|
| 3/4 milk line<br>(~5 days before black layer)                     | <b>Oil Concentrates:</b><br>BeanOil <sup>®</sup><br>(0.5 pt./Ac.)<br>Hot MES <sup>™</sup><br>(0.5 pt./Ac.)              |
| Application Rate  |   |
| 4.8 qts./Ac.  | <b>Surfactants:</b><br>Haf-Pynt <sup>™</sup><br>(0.5 pt./100 gals.)<br>Sil-Fact <sup>®</sup><br>(12 fl. ozs./100 gals.) |
| Water Dilution  |   |
| <b>Air:</b> 5 to 7 gals./Ac.<br><b>Ground:</b> 10 to 20 gals./Ac. |   |

3/4 Milk Line



7 Days After Application



*Defol*<sup>®</sup> 5

vs

Non-Treated

Drexel Chemical Company | (901) 774-4370 | E-mail: [info@drexchem.com](mailto:info@drexchem.com) | [www.DrexChem.com](http://www.DrexChem.com)

BEANOIL, DEFOL, HAF-PYNT, HOT MES, SIL-FACT and the DREXEL logo are either trademarks or registered trademarks of the Drexel Chemical Company. Always read and follow all label instructions on the product container before using.





Drexel

# Flax

## Improve Harvest Efficiency with *Defol*<sup>®</sup> 5

### Product Benefits:

- Fast acting desiccant
- Can be applied by Ground OR Air
- Accelerates crop dry down
- Dry down of green stems results in improved threshing and increased harvest speeds
- Allows for timely harvest, avoiding potential boll loss and weathering of seed
- No residual germination or vigor issues when growing flax for seed
- No PHI

### Keys to Optimal Performance:

- Apply in temperatures >60°F
- Maximize coverage and canopy penetration

### Application Timing

75% to 80% Brown Bolls

### Application Rate

4.8 qts./Ac.

### Water Dilution

**Air:** 5 to 10 gals./Ac.

**Ground:** 10 to 20 gals./Ac.

### Adjuvant & Rate

#### Oil Concentrates:

BeanOil<sup>®</sup>

(0.5 pt./Ac.)

Hot MES<sup>™</sup>

(0.5 pt./Ac.)

#### Surfactants:

Haf-Pynt<sup>™</sup>

(0.5 pt./100 gals.)

Sil-Fact<sup>®</sup>

(12 fl. ozs./100 gals.)

Drexel Chemical Company | (901) 774-4370 | E-mail: [info@drexchem.com](mailto:info@drexchem.com) | [www.DrexChem.com](http://www.DrexChem.com)

BEANOIL, DEFOL, HAF-PYNT, HOT MES, SIL-FACT and the DREXEL logo are either trademarks or registered trademarks of the Drexel Chemical Company. Always read and follow all label instructions on the product container before using.



# Garbanzo Bean

## Improve Harvest Efficiency with *Defol*® 5

### Product Benefits:

- Fast acting desiccant
- Can be applied by Ground OR Air
- Evens crop ripening
- Improves threshing
- Increases harvest speed
- Excellent tank-mix partner
- No PHI

### Keys to Optimal Performance:

- Apply in temperatures >60°F
- Maximize coverage and canopy penetration

### Application Timing

80% yellow pods and  
<30% green leaves

### Application Rate

4.8 qts./Ac.

### Water Dilution

**Air:** 5 to 7 gals./Ac.  
**Ground:** 10 to 20 gals./Ac.

### Adjuvant & Rate

#### Oil Concentrates:

BeanOil®  
(0.5 pt./Ac.)

Hot MES™  
(0.5 pt./Ac.)

#### Surfactants:

Haf-Pynt™  
(0.5 pt./100 gals.)

Sil-Fact®  
(12 fl. ozs./100 gals.)





Drexel

# Grain Sorghum

## Improve Harvest Efficiency with *Defol*<sup>®</sup> 5

### Product Benefits:

- Fast acting desiccant
- Can be applied by Ground OR Air
- Even-up ripening
- Desiccation of Primary and Secondary growth (suckers)
- Harvest 7 to 10 days early
- Improves threshing and harvest speeds
- Alternative to Glyphosate
- No PHI

### Keys to Optimal Performance:

- Apply in temperatures >60°F
- Maximize coverage and canopy penetration

### Application Timing

When kernels in the bottom of the seed head reach black layer (Physiological maturity)

### Application Rate

4.8 qts./Ac.

### Water Dilution

**Air:** 5 to 7 gals./Ac.  
**Ground:** 10 to 20 gals./Ac.

### Adjuvant & Rate

#### Oil Concentrates:

BeanOil<sup>®</sup>  
(0.5 pt./Ac.)  
Hot MES<sup>™</sup>  
(0.5 pt./Ac.)

#### Surfactants:

Haf-Pynt<sup>™</sup>  
(0.5 pt./100 gals.)  
Sil-Fact<sup>®</sup>  
(12 fl. ozs./100 gals.)

Drexel Chemical Company | (901) 774-4370 | E-mail: [info@drexchem.com](mailto:info@drexchem.com) | [www.DrexChem.com](http://www.DrexChem.com)

BEANOIL, DEFOL, HAF-PYNT, HOT MES, SIL-FACT and the DREXEL logo are either trademarks or registered trademarks of the Drexel Chemical Company. Always read and follow all label instructions on the product container before using.





Drexel

# Rice

## Improve Harvest Efficiency with *Defol*<sup>®</sup> 5

### Product Benefits:

- Fast acting desiccant
- Can be applied by Ground OR Air
- Harvest 7 to 10 days earlier
- Improves harvest efficiency
- Increases harvest speed
- Improves milling quality
- No PHI

### Keys to Optimal Performance:

- Apply in temperatures >60°F
- Maximize coverage and canopy penetration

### Application Timing

23% moisture (hybrid),  
25% moisture (conventional)

### Application Rate

3.0 to 4.8 qts./Ac.

### Water Dilution

**Air:** 5 to 7 gals./Ac.  
**Ground:** 10 to 20 gals./Ac.

### Adjuvant & Rate

#### Oil Concentrates:

BeanOil<sup>®</sup>  
(0.5 pt./Ac.)

Hot MES<sup>™</sup>  
(0.5 pt./Ac.)

#### Surfactants:

Haf-Pynt<sup>™</sup>  
(0.5 pt./100 gals.)

Sil-Fact<sup>®</sup>  
(12 fl. ozs./100 gals.)

Drexel Chemical Company | (901) 774-4370 | E-mail: [info@drexchem.com](mailto:info@drexchem.com) | [www.DrexChem.com](http://www.DrexChem.com)

BEANOIL, DEFOL, HAF-PYNT, HOT MES, SIL-FACT and the DREXEL logo are either trademarks or registered trademarks of the Drexel Chemical Company. Always read and follow all label instructions on the product container before using.



Drexel

# Safflower

## Improve Harvest Efficiency with *Defol*<sup>®</sup> 5

### Product Benefits:

- Fast acting desiccant
- Can be applied by Ground OR Air
- Accelerates crop dry down
- Desiccation results in improved threshing and increased harvest speeds
- Evens crop ripening
- Applicable for Safflower grown for all uses (oil, seed, etc.)
- No PHI

### Keys to Optimal Performance:

- Apply in temperatures >60°F
- Maximize coverage and canopy penetration

| Application Timing  |
|---|
| About 30 days after flowering.  |
| Application Rate  |
| 4.8 qts./Ac.  |
| Water Dilution  |
| <b>Air:</b> 5 to 10 gals./Ac.<br><b>Ground:</b> 20 to 30 gals./Ac.  |
| Adjuvant & Rate   |
| <b>Oil Concentrates:</b><br>BeanOil <sup>®</sup><br>(0.5 pt./Ac.)<br>Hot MES <sup>™</sup><br>(0.5 pt./Ac.)<br><br><b>Surfactants:</b><br>Haf-Pynt <sup>™</sup><br>(0.5 pt./100 gals.)<br>Sil-Fact <sup>®</sup><br>(12 fl. ozs./100 gals.) |



Drexel

# Seed Corn

## Improve Harvest Efficiency with *Defol*<sup>®</sup> 5

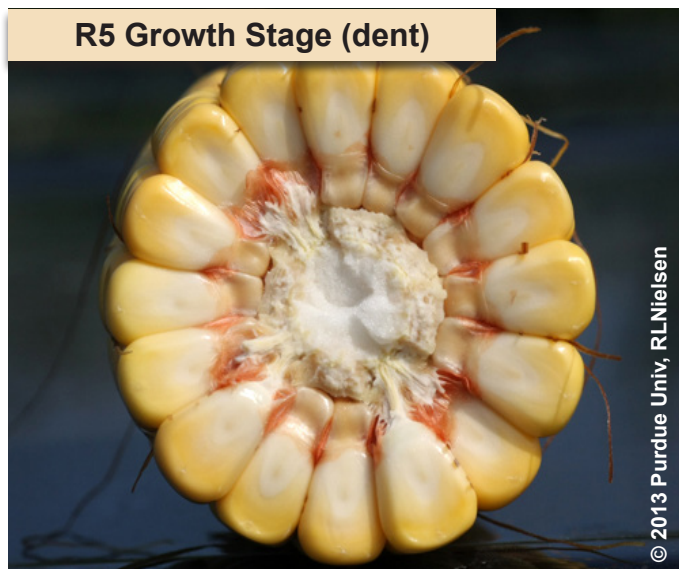
### Product Benefits:

- Fast acting desiccant
- Can be applied by Ground OR Air
- Improved Market Grade Size
- Increased Cold Germination
- Bag Weight Reduction
- Improved Harvest Efficiency
- No PHI

### Keys to Optimal Performance:

- Apply in temperatures above 60°F
- Apply with a crop oil or non-ionic surfactant

R5 Growth Stage (dent)



| Application Timing  | Application Rate   | Adjuvant & Rate   |   |
|---|--|---|---|
| <b>Apply:</b> 58 to 60% moisture (dent)<br><br><b>Harvest:</b> 38 to 40% moisture or 12 to 15 days after application (weather permitting) | 4.8 qts. /Ac.  | <b>Oil Concentrates:</b><br>Peptoil <sup>®</sup><br>(1 qt./Ac.) | <b>Surfactants:</b><br>Haf-Pynt <sup>™</sup><br>(0.5 pt./100 gals.) |
|   | <b>Water Dilution</b>  |   |   |
|   | <b>Air:</b><br>3 to 10 gals./Ac.<br><b>Ground:</b><br>20 to 30 gals./Ac. | <b>Primary<sup>™</sup></b><br>(0.5 pt./Ac.)                     | <b>Sil-Fact<sup>®</sup></b><br>(12 fl. ozs./100 gals.)              |

Drexel Chemical Company | (901) 774-4370 | E-mail: [info@drexchem.com](mailto:info@drexchem.com) | [www.DrexChem.com](http://www.DrexChem.com)

<sup>1</sup>Improved germination only occurs on specific inbred lines / varieties

R5 Photo Courtesy of Nielsen, RL (Bob). 2013. Grain Fill Stages in Corn. Corny News Network, Purdue University. <https://www.kingcorn.org/news/timeless/GrainFill.html>. Accessed July 2016.

DEFOL, HAF-PYNT, PEPTOIL, PRIMARY, SIL-FACT and the DREXEL logo are either trademarks or registered trademarks of Drexel Chemical Company. Always read and follow the label instructions on the product container(s) before using.

**Drexel**

# Soybean

***Defol*<sup>®</sup> 5 can be applied to Soybeans  
to reduce crop moisture, allowing earlier harvest**

## Product Benefits:

- Fast acting desiccant
- Can be applied by Ground OR Air
- Eliminates green stem and reduces grain moisture
- Improves harvest efficiency and allows 7 to 10 days earlier harvest
- No PHI

## Keys to Optimal Performance:

- Apply in temperatures above 60°F
- Maximize coverage by increasing total spray volume per acre
- Maximize performance by including an oil concentrate (optimum) or non-ionic surfactant (minimum)

**R6 Growth Stage**



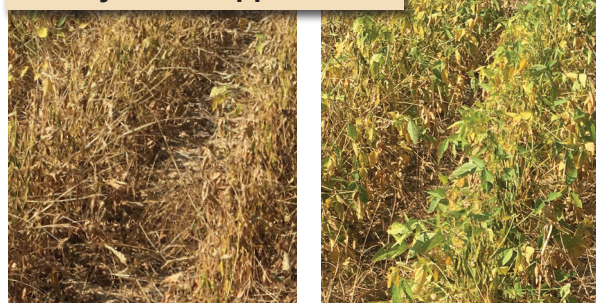
**R6.5 Growth Stage**



**R7 Growth Stage**



**3 Days After Application**



***Defol*<sup>®</sup> 5 vs Non-Treated**

| Application Timing   | Adjuvant & Rate   |
|--|---|
| R6.5: Membrane separation from seed in uppermost 4 nodes.<br>Approx. 60% seed moisture | <b>Oil Concentrates:</b><br>BeanOil <sup>®</sup><br>(0.5 pt./Ac.)<br>Hot MES <sup>™</sup><br>(0.5 pt./Ac.)              |
| <b>Application Rate</b>  | <b>Surfactants:</b><br>Haf-Pynt <sup>™</sup><br>(0.5 pt./100 gals.)<br>Sil-Fact <sup>®</sup><br>(12 fl. ozs./100 gals.) |
| 4.8 qts. / Ac.   |   |
| <b>Water Dilution</b>  |   |
| <b>Air:</b> 5 to 7 gals./Ac.<br><b>Ground:</b> 10 to 20 gals./Ac.                      |   |

Drexel Chemical Company | (901) 774-4370 | E-mail: [info@drexchem.com](mailto:info@drexchem.com) | [www.DrexChem.com](http://www.DrexChem.com)

BEANOIL, DEFOL, HAF-PYNT, HOT MES, SIL-FACT and the DREXEL logo are either trademarks or registered trademarks of the Drexel Chemical Company. Always read and follow all label instructions on the product container before using.





Drexel

# Sunflower

## Improve Harvest Efficiency with *Defol*<sup>®</sup> 5

### Product Benefits:

- Fast acting desiccant
- Can be applied by Ground OR Air
- Harvest 5 to 10 days earlier
- Reduce blackbird feeding
- Reduce late season diseases
- Reduce lodging
- Reduce drying cost
- PHI is 7 days

### Keys to Optimal Performance:

- Apply when air temperature >60°F
- Maximize coverage and canopy penetration

### Application Timing

When bracts turn brown at the shoulder  
<35% moisture/R9

### Application Rate

4.8 qts./Ac.

### Water Dilution

**Air:** 3 to 10 gals./Ac.  
**Ground:** 20 to 30 gals./Ac.

### Adjuvant & Rate

#### Oil Concentrates:

BeanOil<sup>®</sup>  
(0.5 pt./Ac.)  
Hot MES<sup>™</sup>  
(0.5 pt./Ac.)

#### Surfactants:

Haf-Pynt<sup>™</sup>  
(0.5 pt./100 gals.)  
Sil-Fact<sup>®</sup>  
(12 fl. ozs./100 gals.)

Drexel Chemical Company | (901) 774-4370 | E-mail: [info@drexchem.com](mailto:info@drexchem.com) | [www.DrexChem.com](http://www.DrexChem.com)

BEANOIL, DEFOL, HAF-PYNT, HOT MES, SIL-FACT and the DREXEL logo are either trademarks or registered trademarks of the Drexel Chemical Company. Always read and follow all label instructions on the product container before using.

# Wheat

## Improve Harvest Efficiency with *Defol*® 5

### Product Benefits:

- Fast acting desiccant
- Can be applied by Ground OR Air
- Harvest 7 to 10 days earlier
- Improve harvest efficiency
- Increase harvest speed
- Expedite double crop planting dates
- Excellent tank-mix partner
- Alternative to Glyphosate
- PHI is 3 days

### Keys to Optimal Performance:

- Apply in temperatures >60°F
- Maximize coverage and canopy penetration

### Application Timing

Physiological Maturity

### Application Rate

4.8 qts./Ac.

### Water Dilution

**Air:** Minimum 5 gals./Ac.

**Ground:** Minimum 10 gals./Ac.

### Adjuvant & Rate

#### Oil Concentrates:

BeanOil®  
(0.5 pt./Ac.)

Hot MES™  
(0.5 pt./Ac.)

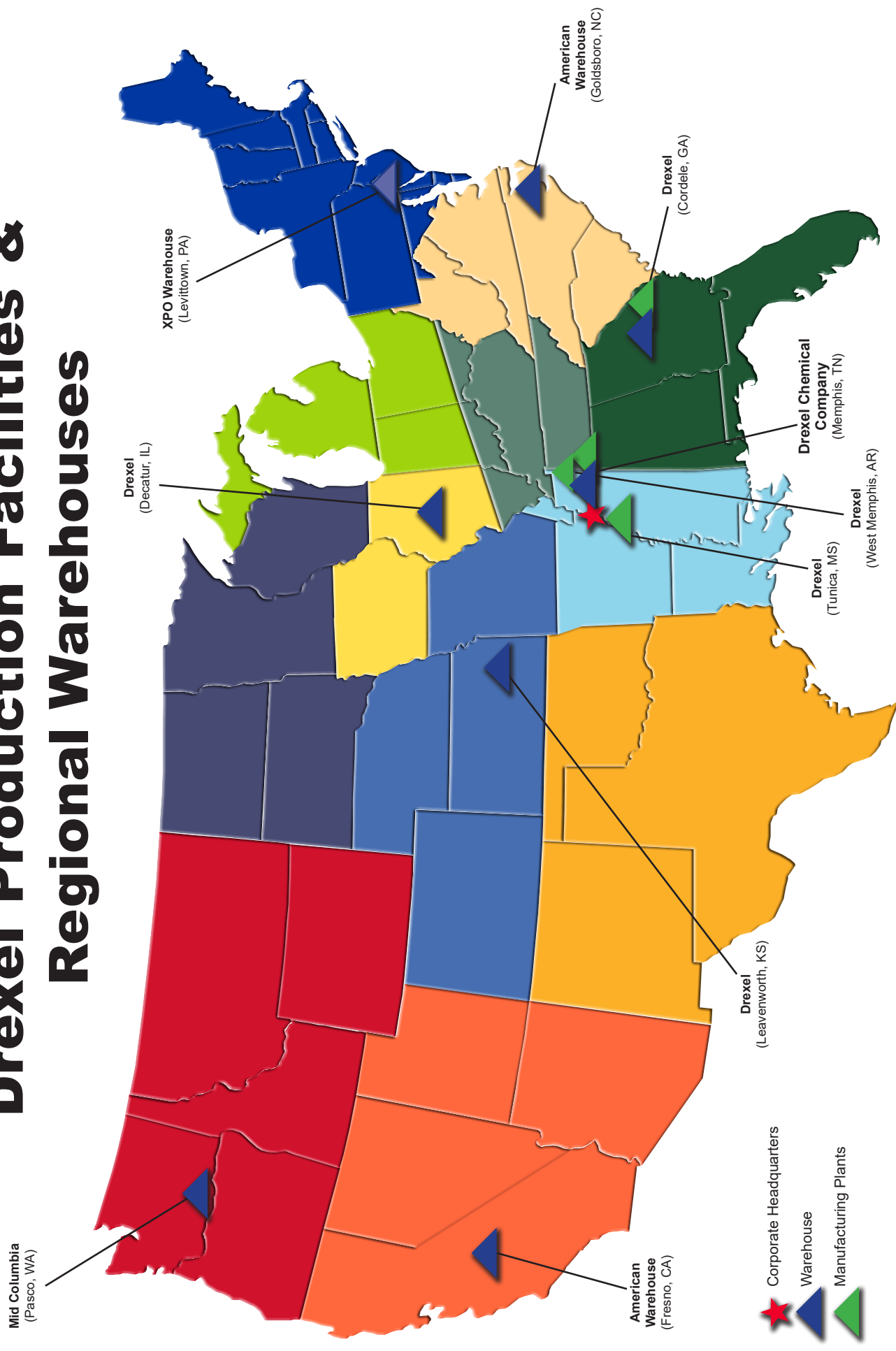
#### Surfactants:

Haf-Pynt™  
(0.5 pt./100 gals.)

Sil-Fact®  
(12 fl. ozs./100 gals.)



# Drexel Production Facilities & Regional Warehouses



Drexel holds warehouses and manufacturing facilities in Pasco, WA; Fresno, CA; Leavenworth, KS; West Memphis, AR; Tunica, MS; Goldsboro, NC; Cordale, GA; Decatur, IL; Levittown, PA plus our Corporate headquarters in Memphis, TN. Visit the Drexel website at [www.DrexChem.com](http://www.DrexChem.com) to find the salesman closest to you. SDS and labels are also available online.



**Drexel Chemical Company**

Call 901.774.4370 or visit [DrexChem.com](http://DrexChem.com)  
to contact your regional sales representative.