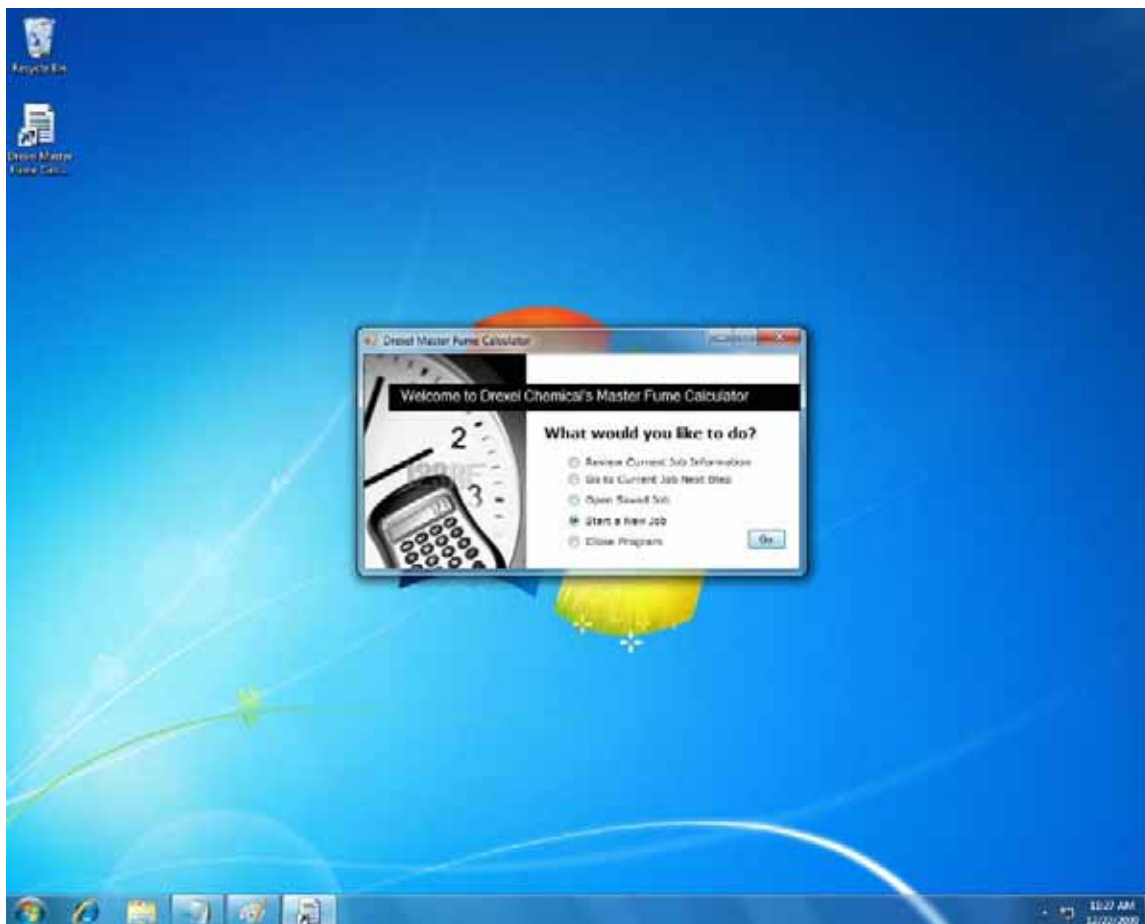


Master Fume Desktop Calculator Manual

Creating a new non-monitored job

Open the Master Fume Desktop Calculator by double clicking the icon on your desktop. The intro screen will be loaded. Select 'Start a New Job' and click 'Go'.



Enter in the client information and click 'Next'.



Enter in the Dosage Factor and click 'Next'.



Enter in the Tarp Condition and click 'Next'.



Enter in the Seal Condition and click 'Next'.



Enter in the Wind Speed and click 'Next'.



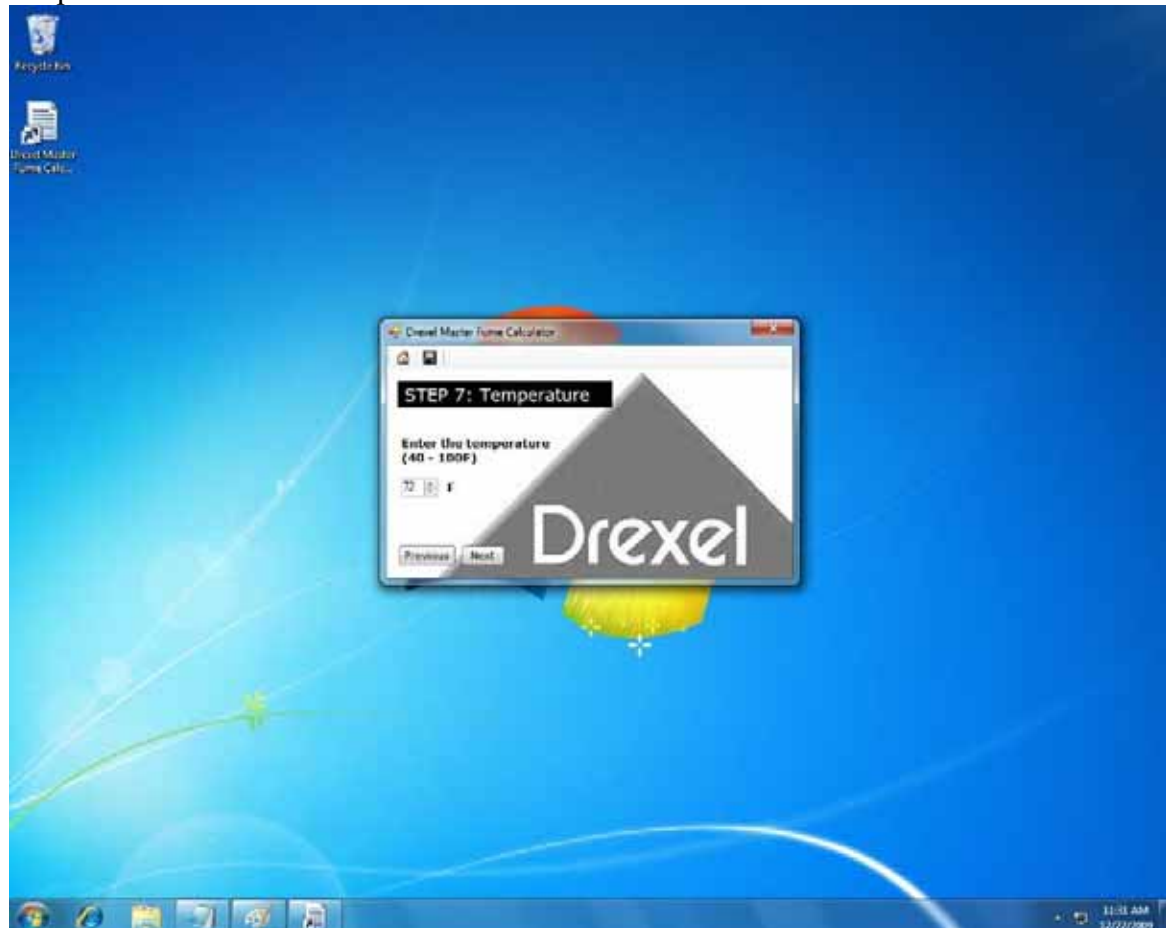
Enter in the Volume and click 'Next'.



Enter in the Underseal and click 'Next'.



Enter in the Temperature and click 'Next'.



Enter in the Exposure and click 'Next'.



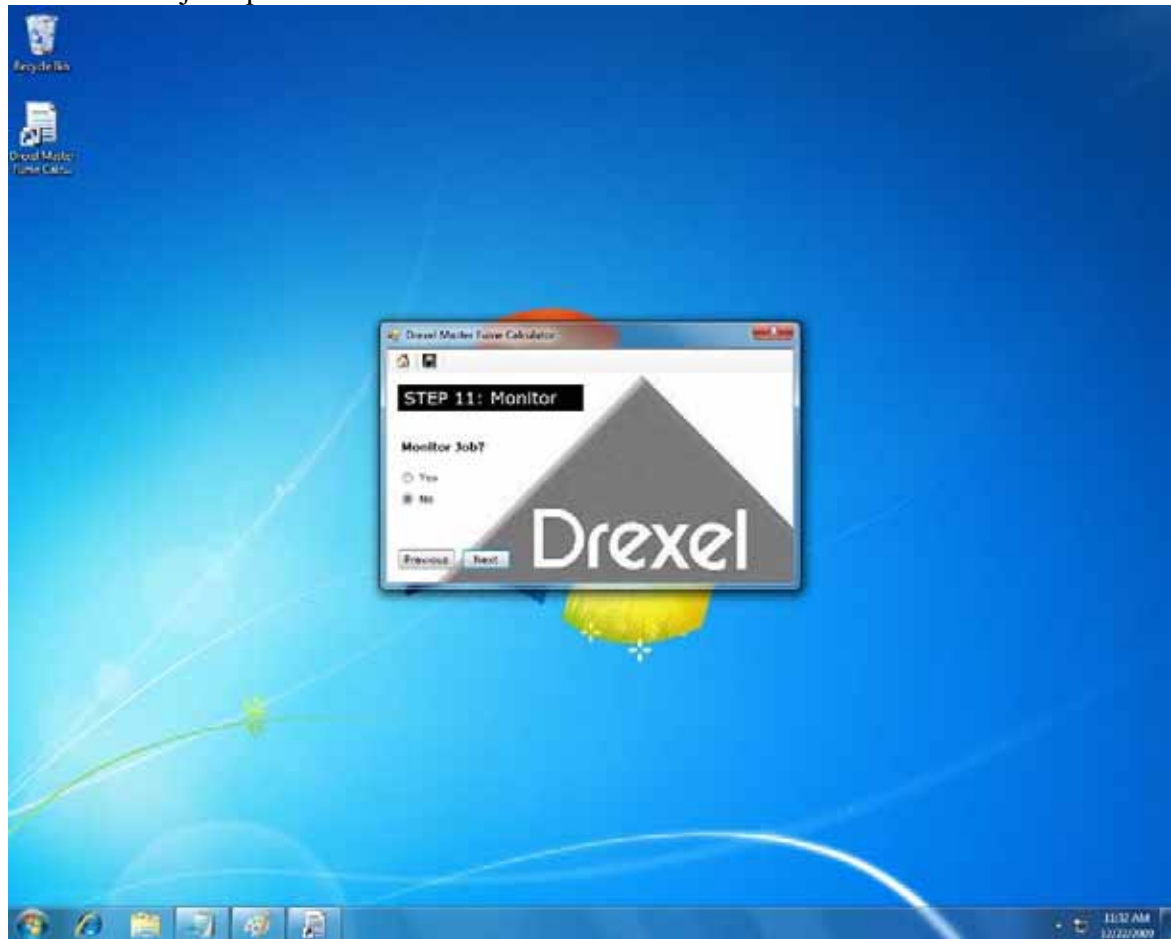
Enter in the Humidity and click 'Next'.



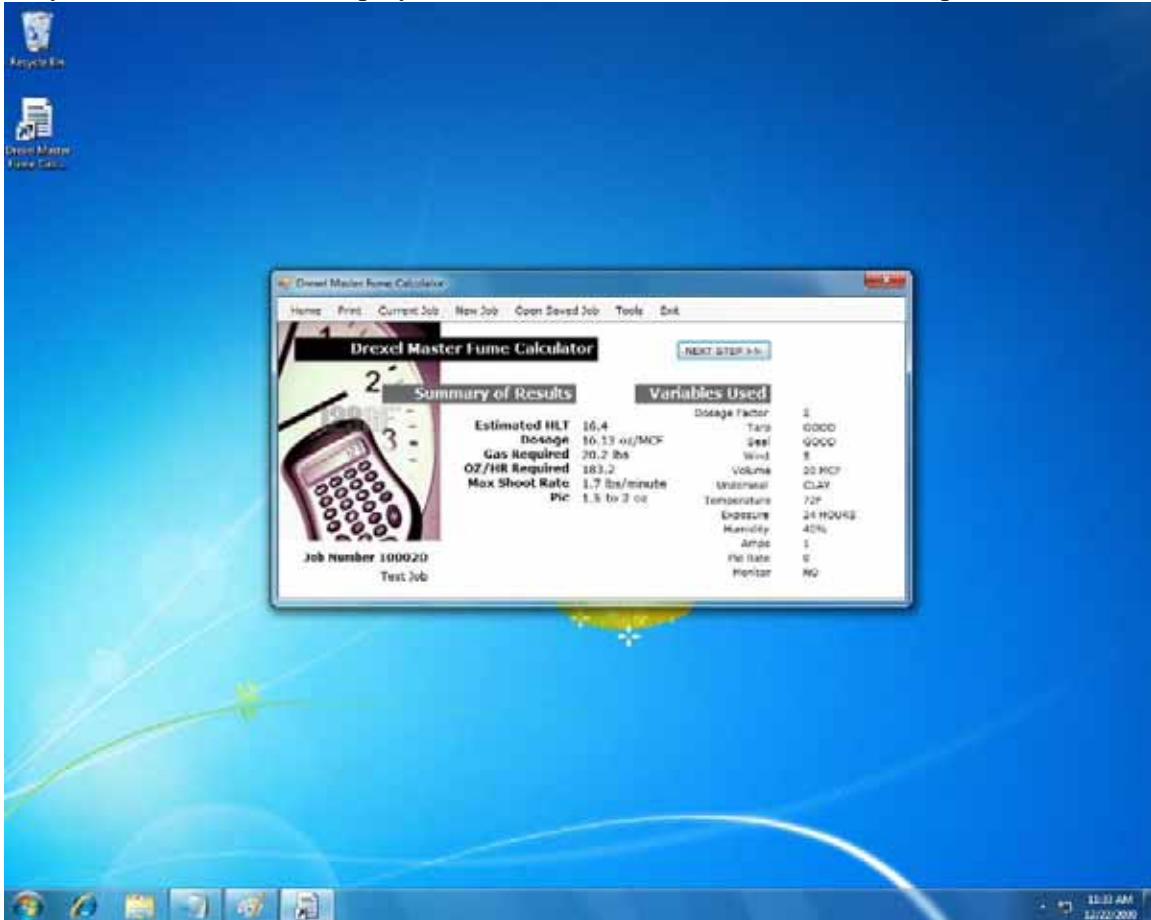
Enter in the Amps and click 'Next'.



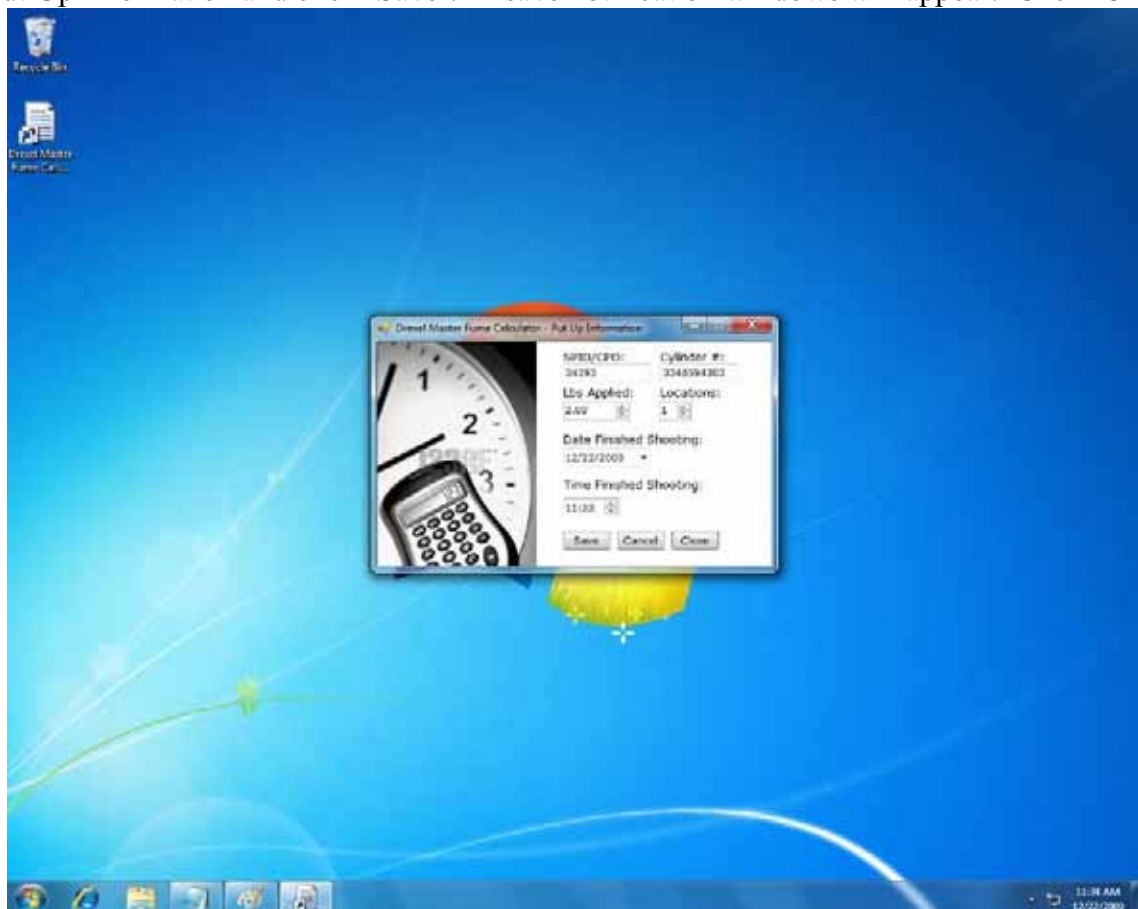
Select 'No' for monitored job option and click 'Next'.



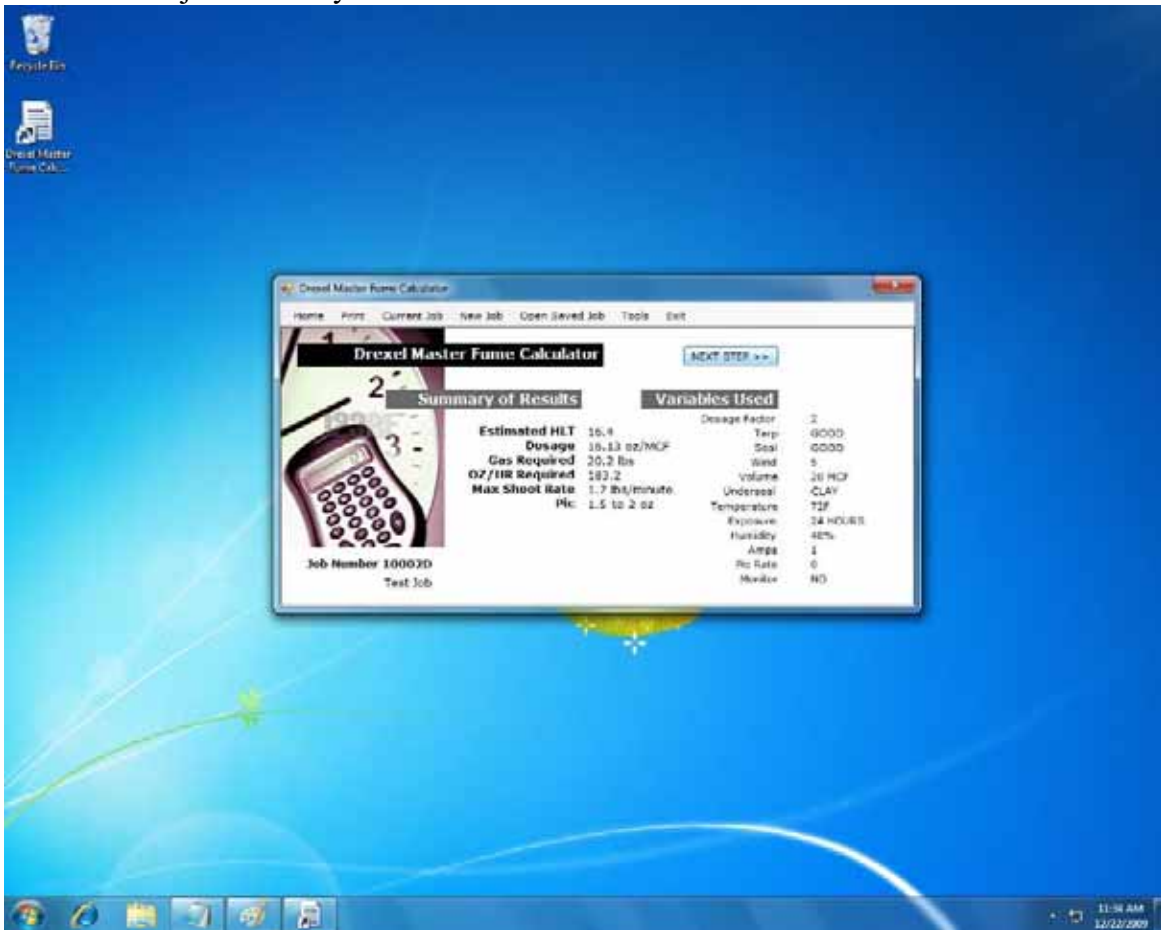
The job summary screen will now be displayed. Click 'Next' to continue to the Put Up Information screen.



Enter in the Put Up Information and click 'Save'. A save notification windows will appear. Click 'OK'.



You should now be on the job summary screen. Click 'Next' to continue to the Take Down Screen.



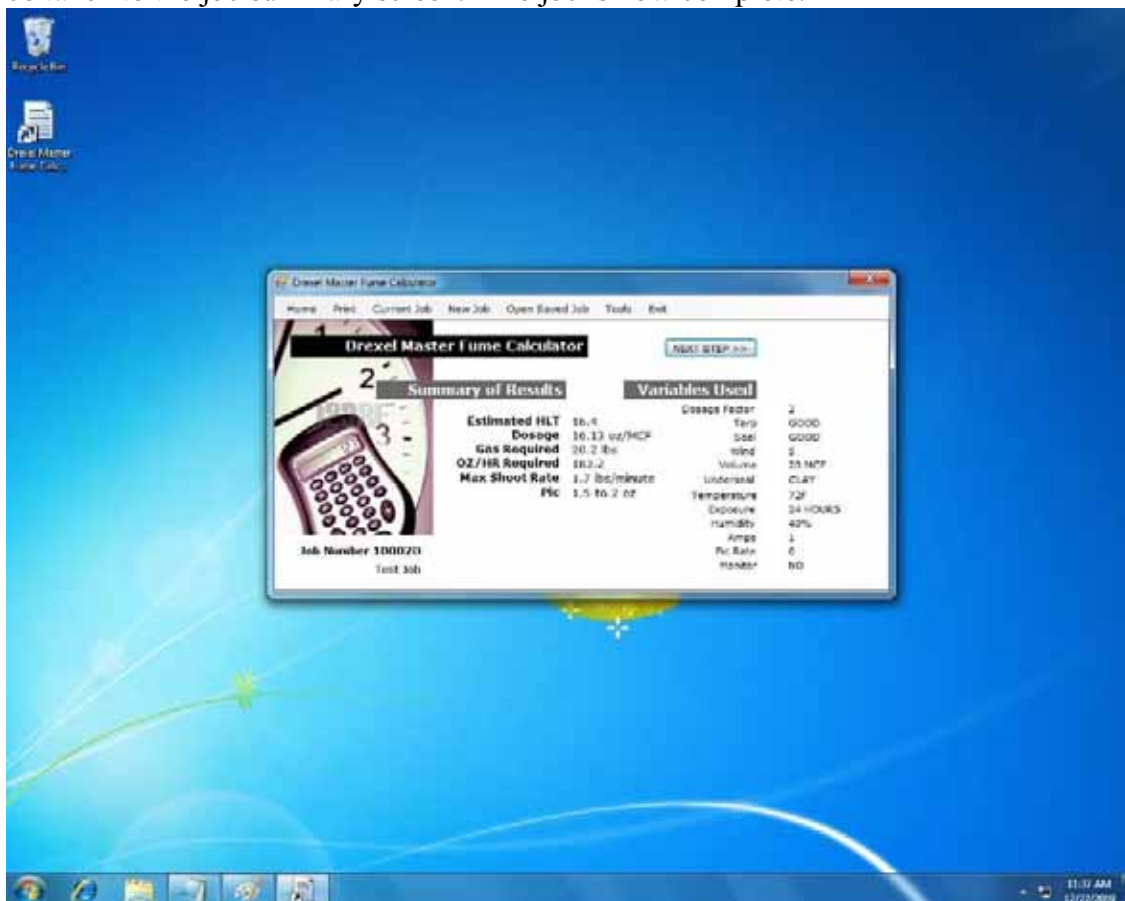
Put in the take down information on page 1 of 2. Click 'Save', 'Ok', and then click 'Part 2'.



Put in the take down information on page 2 of 2. Click 'Save', 'Ok', and then click 'Close'.

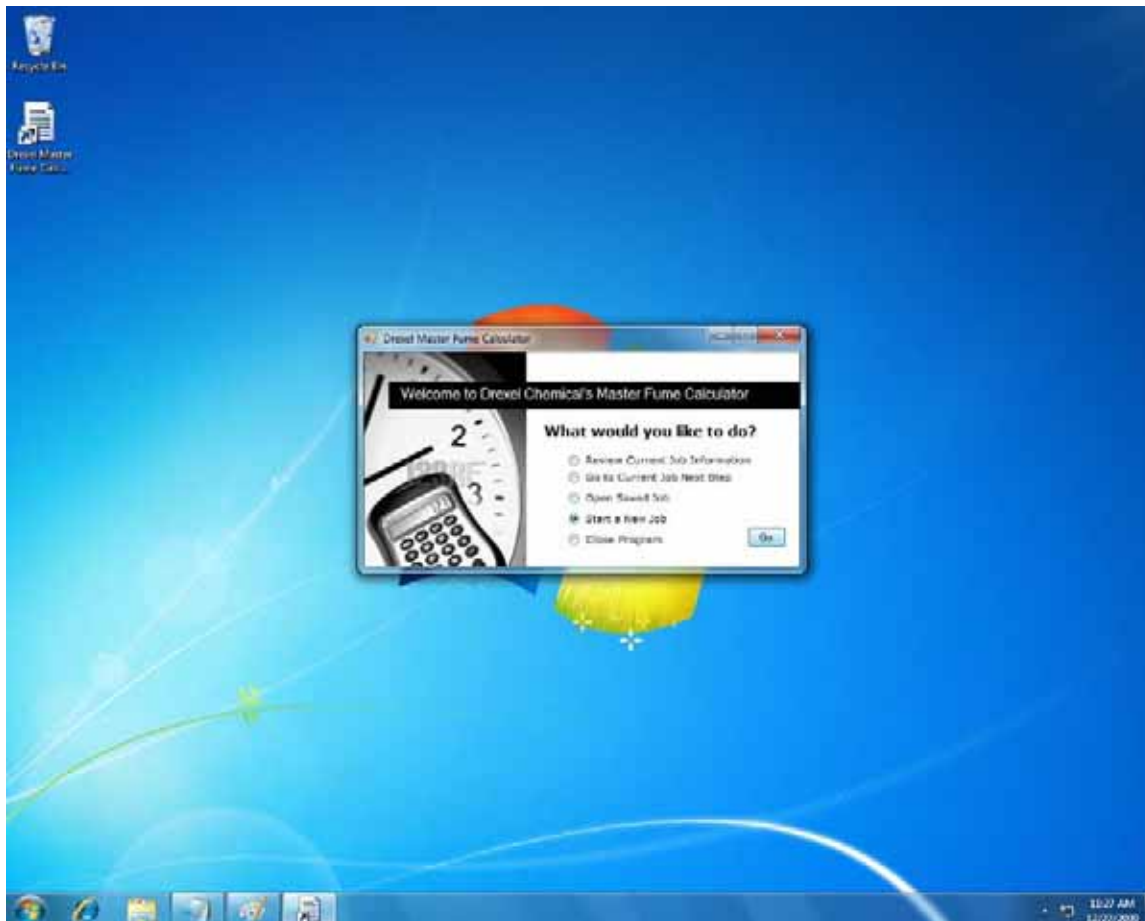


You will now be taken to the job summary screen. The job is now complete.



Creating a new monitored job

Open the Master Fume Desktop Calculator by double clicking the icon on your desktop. The intro screen will be loaded. Select 'Start a New Job' and click 'Go'.



Enter in the client information and click 'Next'.



Enter in the Dosage Factor and click 'Next'.



Enter in the Tarp Condition and click 'Next'.



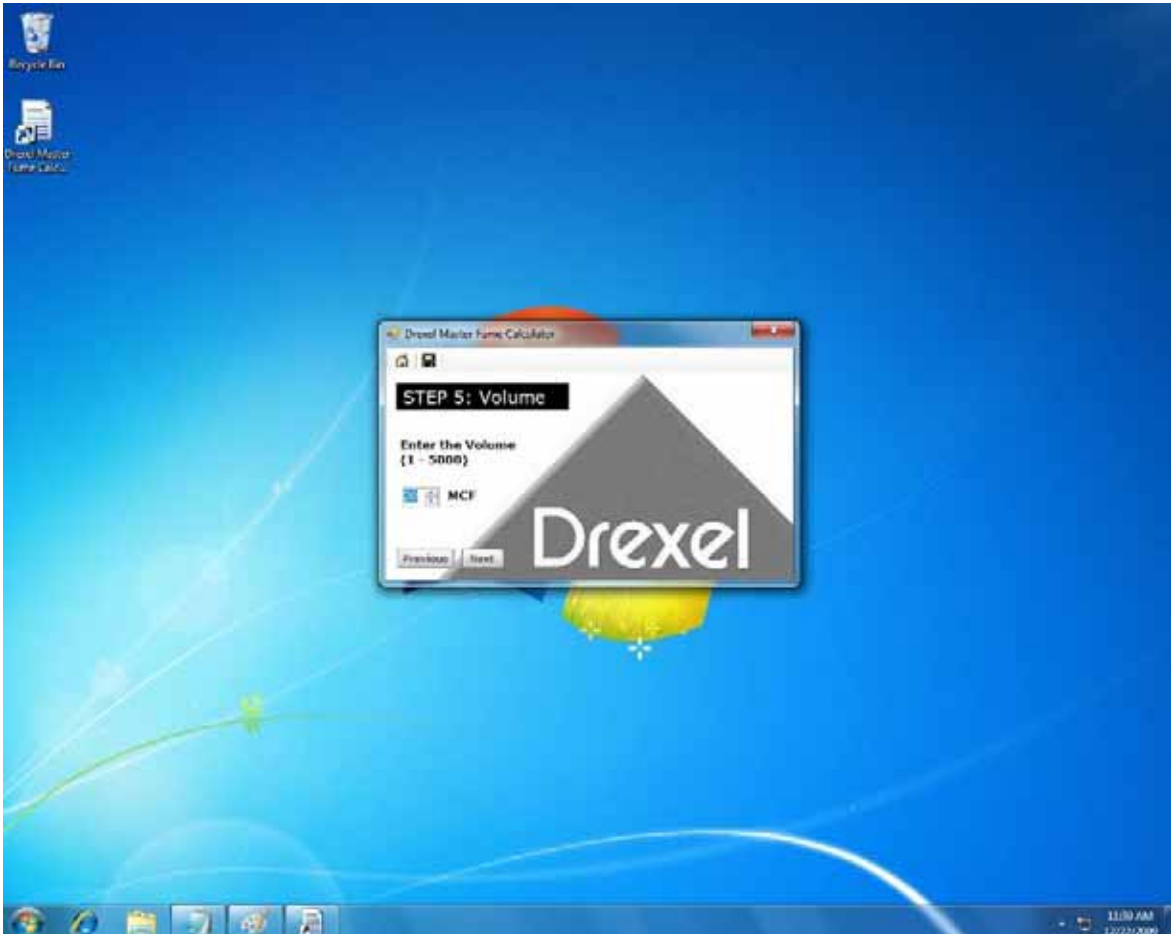
Enter in the Seal Condition and click 'Next'.



Enter in the Wind Speed and click 'Next'.



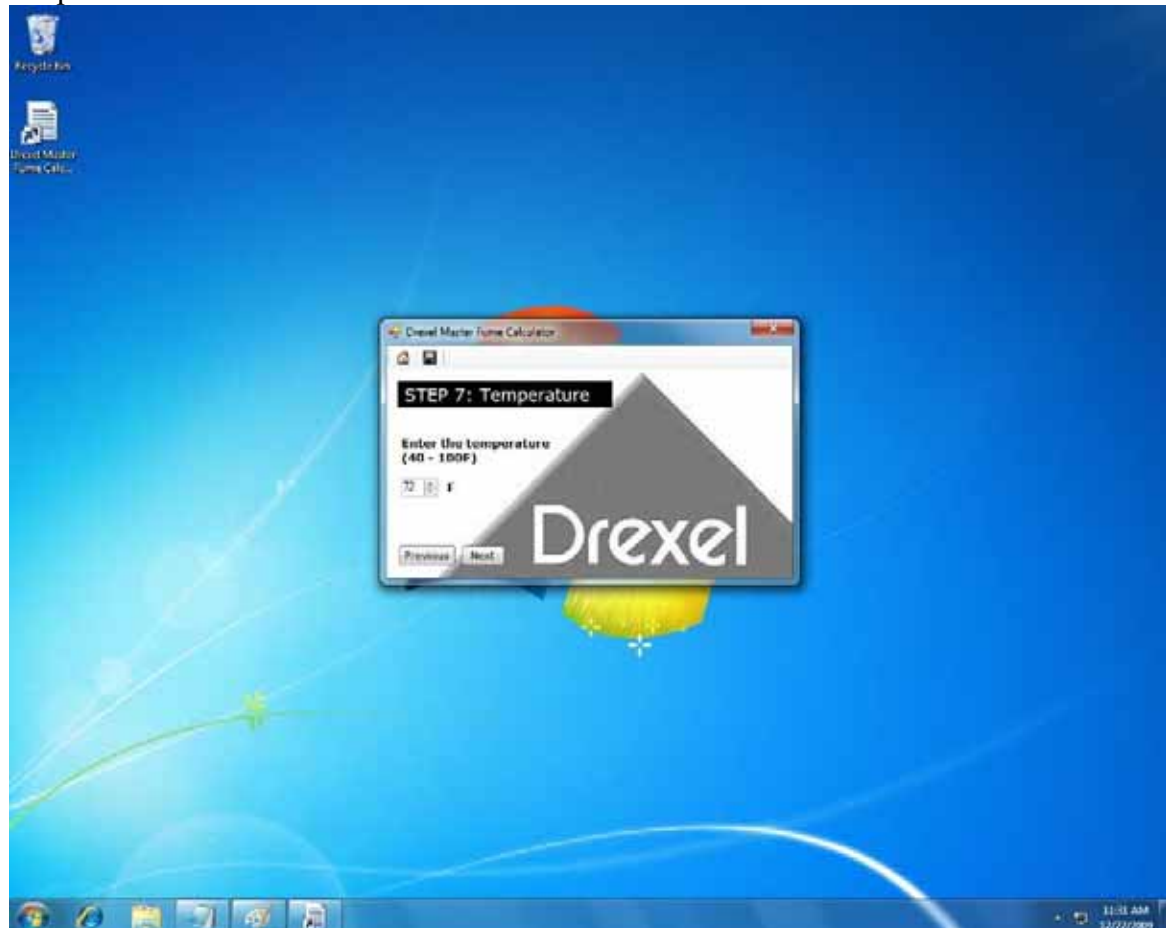
Enter in the Volume and click 'Next'.



Enter in the Underseal and click 'Next'.



Enter in the Temperature and click 'Next'.



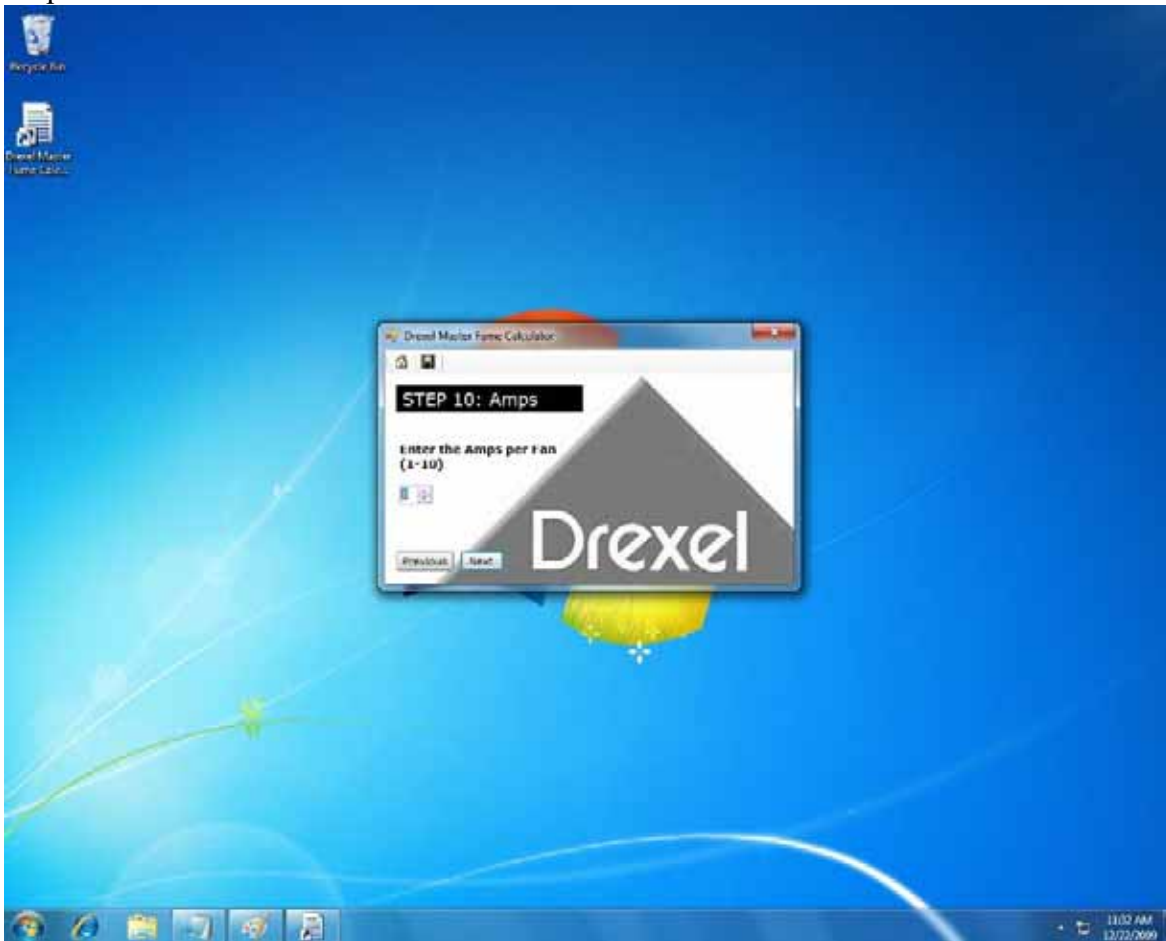
Enter in the Exposure and click 'Next'.



Enter in the Humidity and click 'Next'.



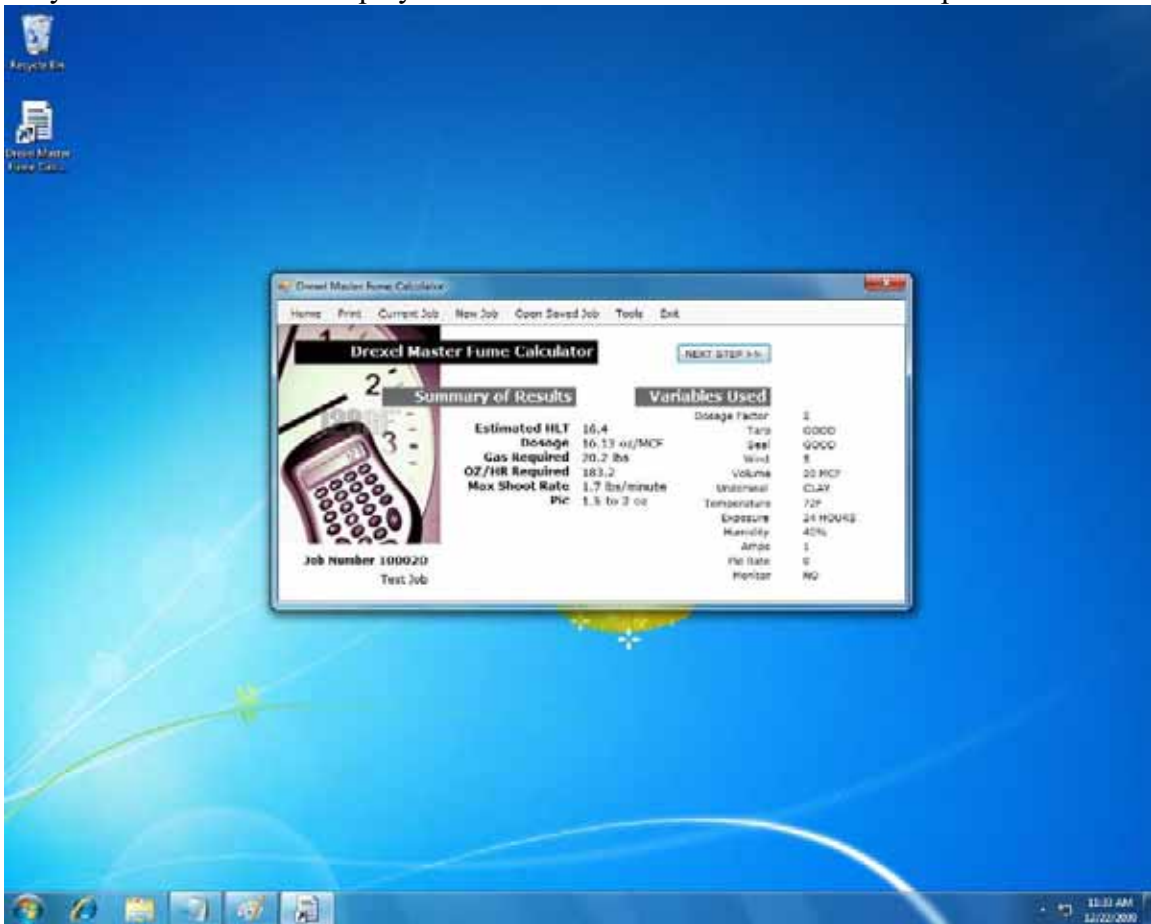
Enter in the Amps and click 'Next'.



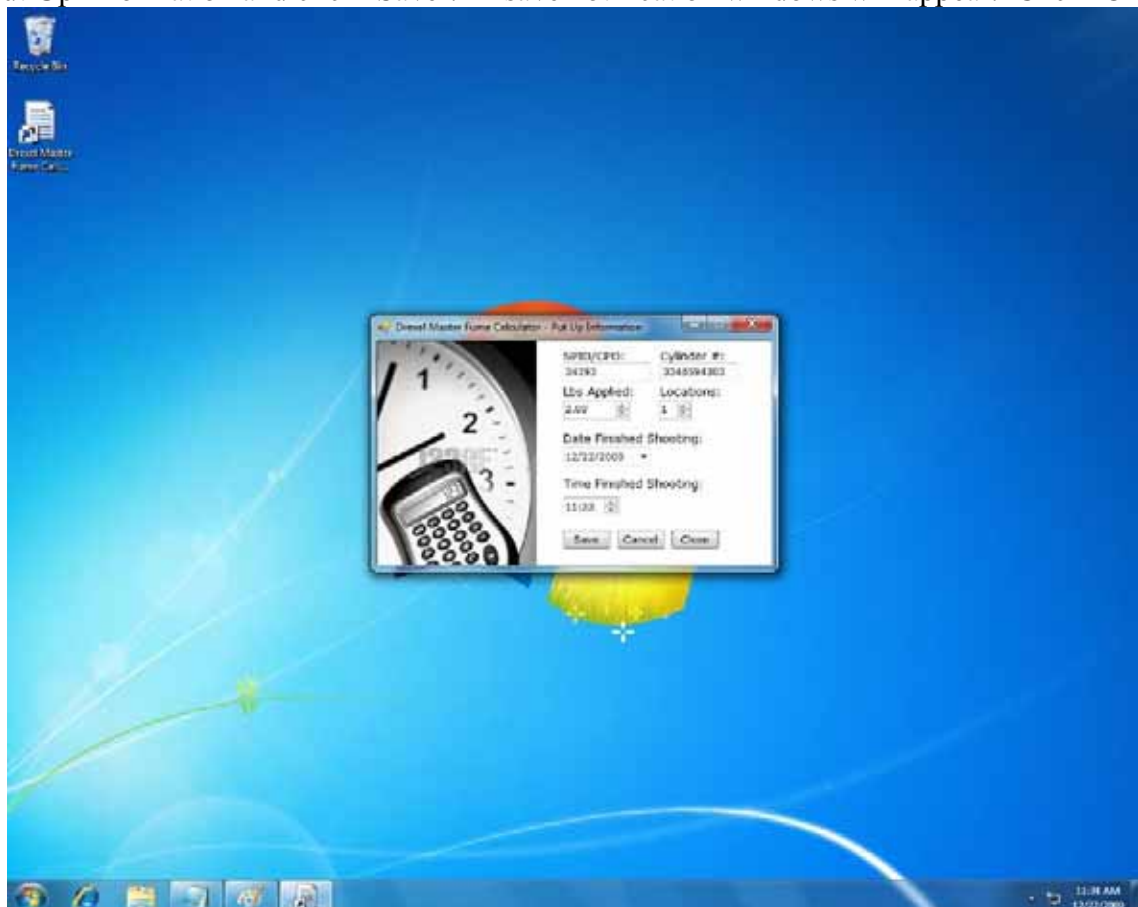
Select 'Yes' for monitored job option and click 'Next'.



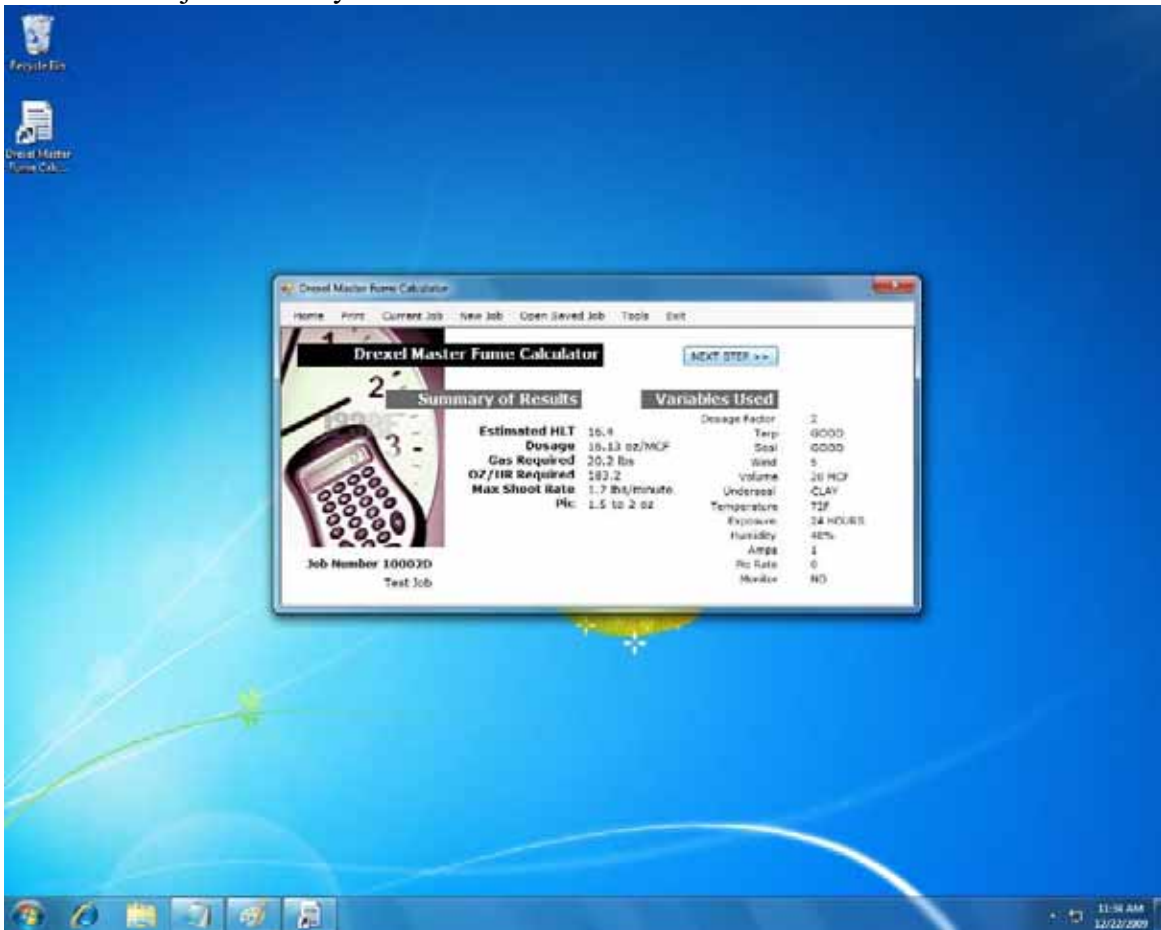
The job summary screen will now be displayed. Click 'Next' to continue to the Put Up Information screen.



Enter in the Put Up Information and click 'Save'. A save notification windows will appear. Click 'OK'.



You should now be on the job summary screen. Click 'Next' to continue to the Take Down Screen.



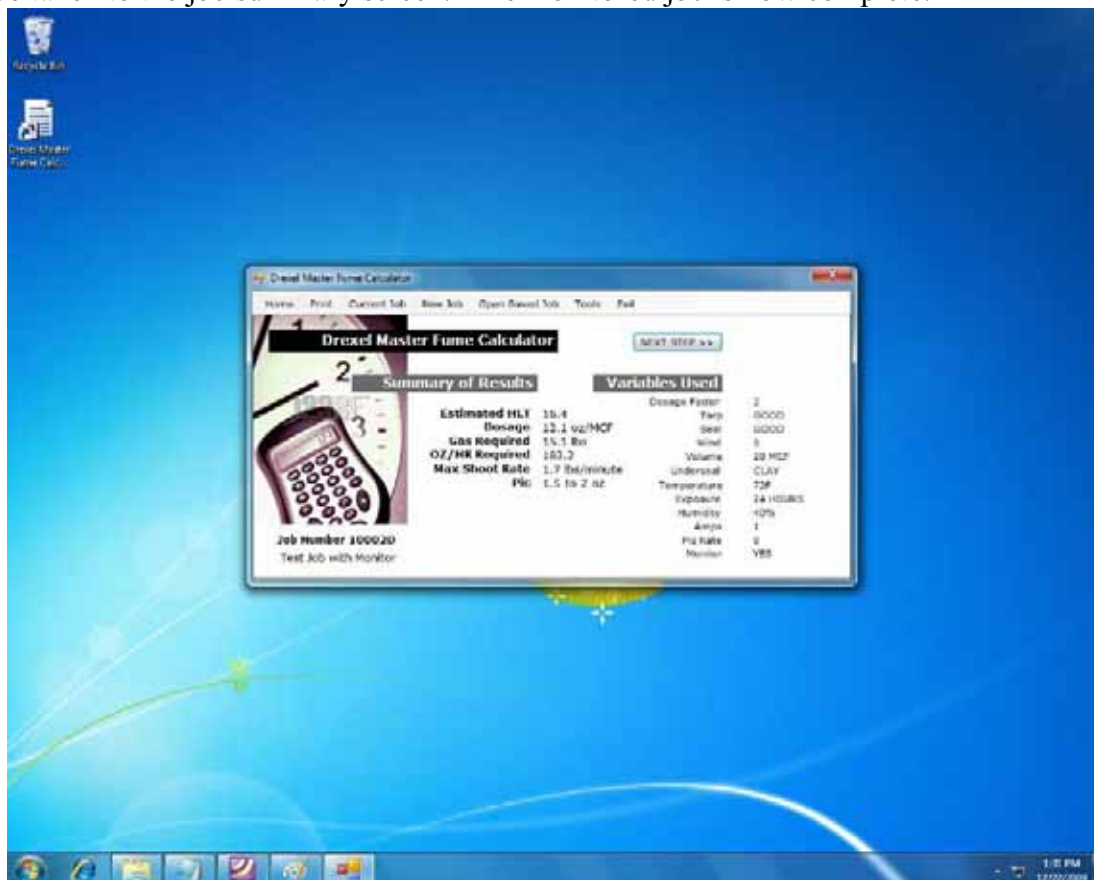
Put in the take down information on page 1 of 2. Click 'Save', 'Ok', and then click 'Part 2'.



Put in the take down information on page 2 of 2. Click 'Save', 'Ok', and then click 'Close'.

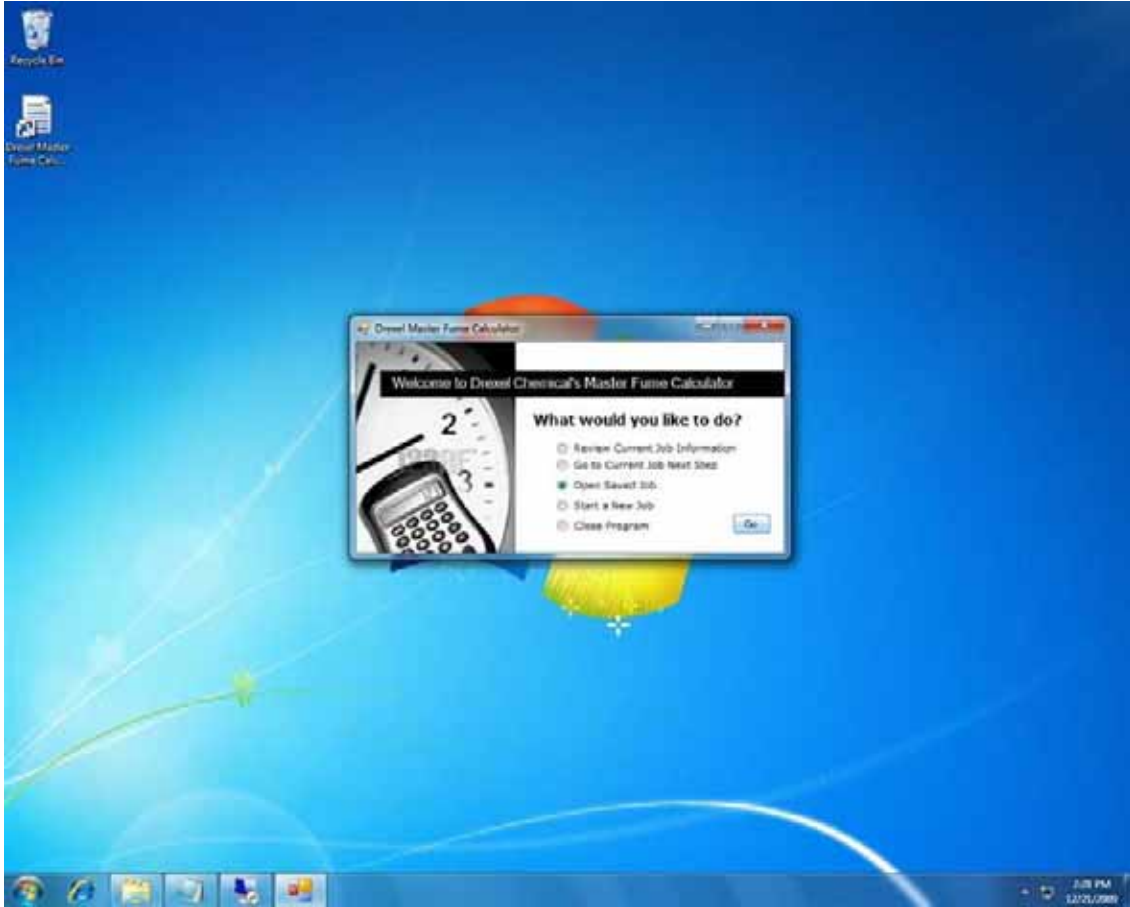


You will now be taken to the job summary screen. The monitored job is now complete.

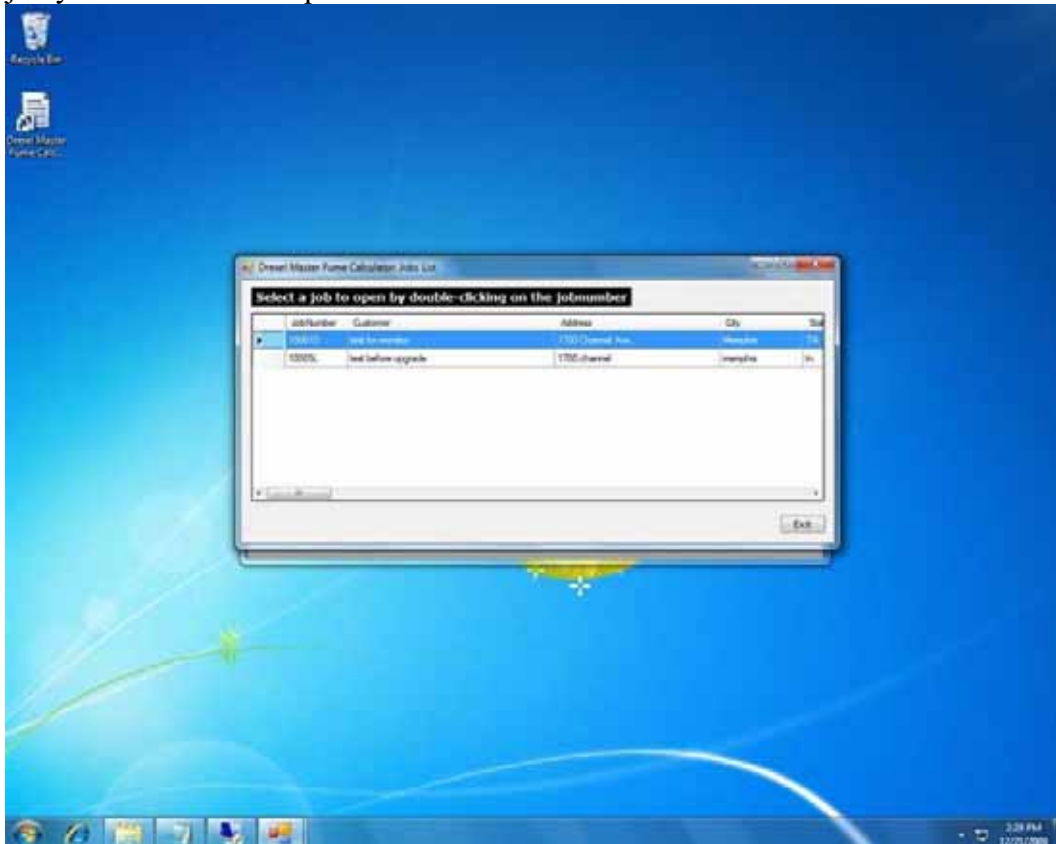


How to open a Saved Job

Open the Master Fume Desktop Calculator by double clicking the icon on your desktop. The intro screen will be loaded. Select 'Open a Saved Job' and click 'Go'



Double click the job you would like to open.



You will now be taken to that job's summary screen.

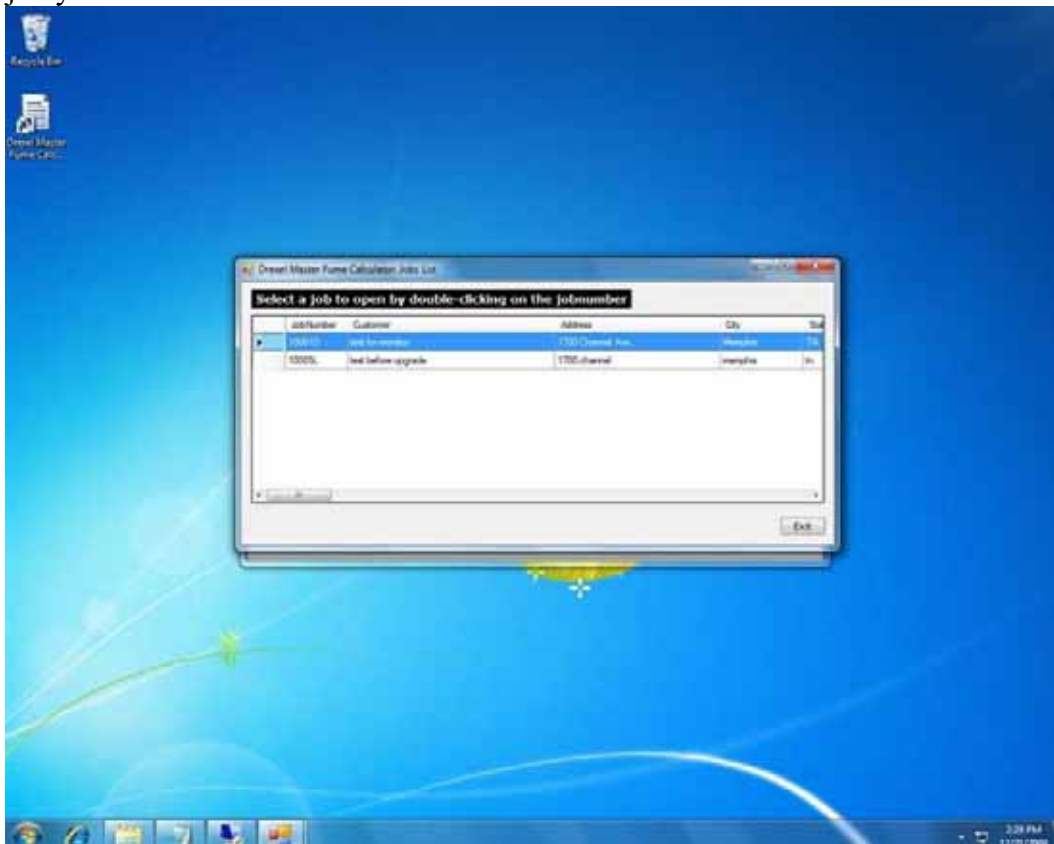


How to Save a Job as a PDF file

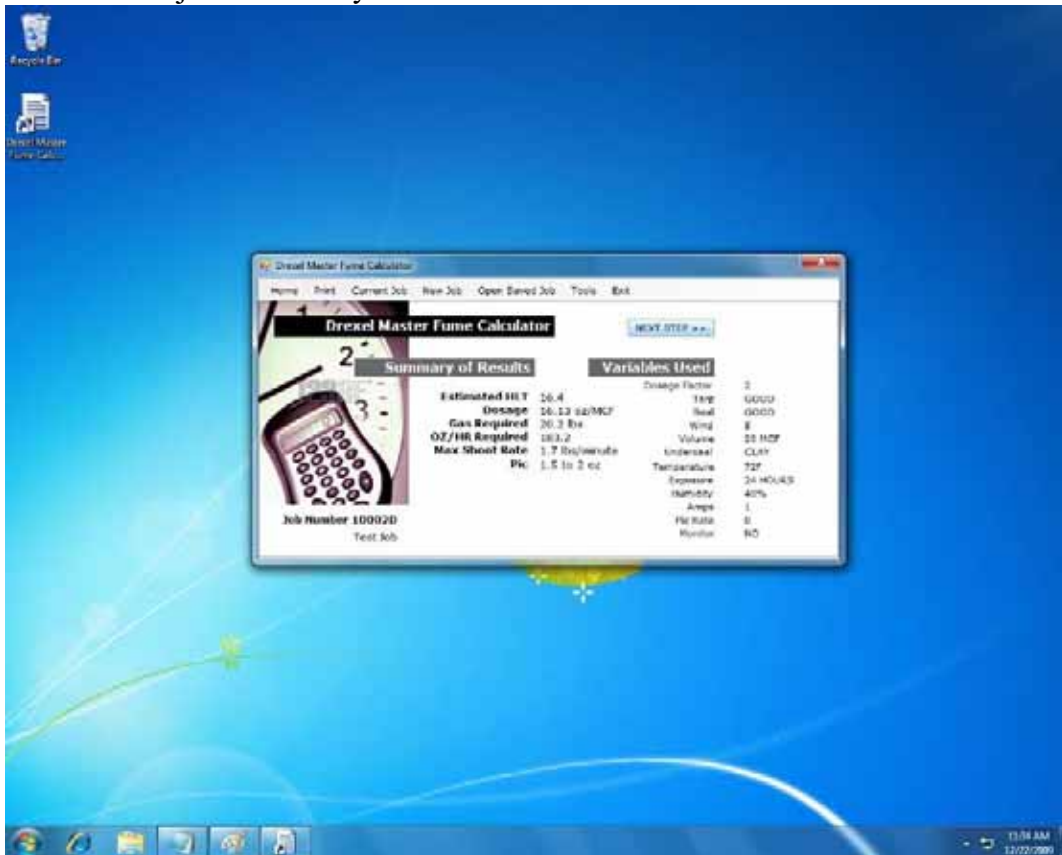
Open the Master Fume Desktop Calculator by double clicking the icon on your desktop. The intro screen will be loaded. Select 'Open a Saved Job' and click 'Go'



Double click the job you would like to save as a PDF.



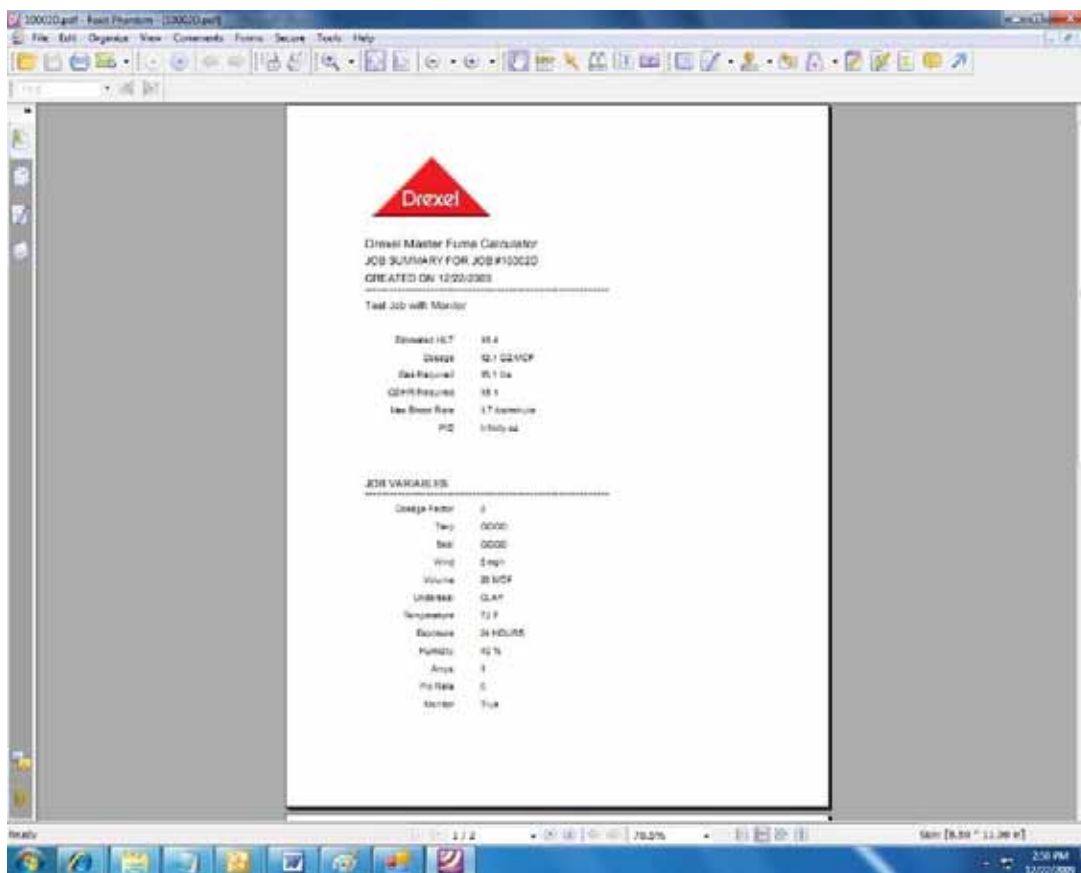
You will now be taken to that job's summary screen.



Click 'Current Job' and then click 'Create PDF'.

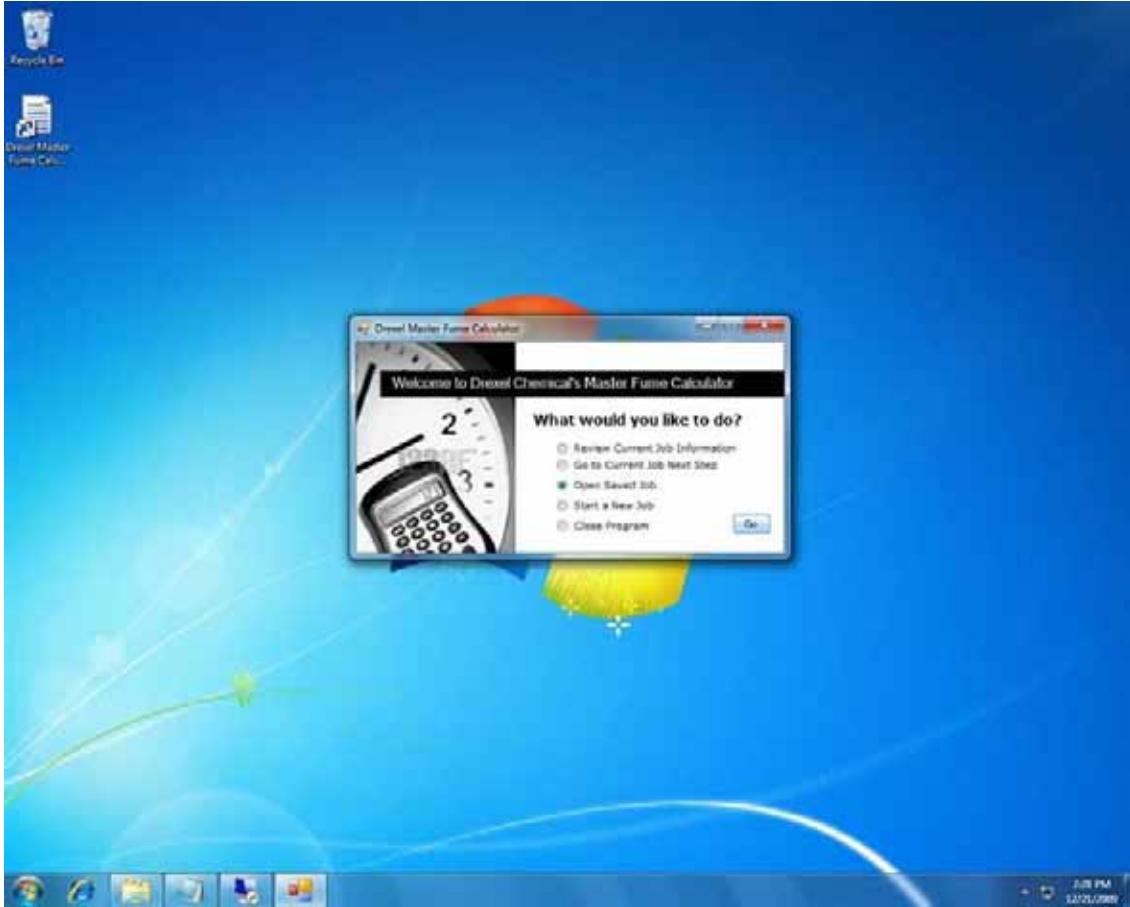


Your default PDF viewer will then be loaded with your job summary displayed. At this point you can email, save, and/or print your PDF file.

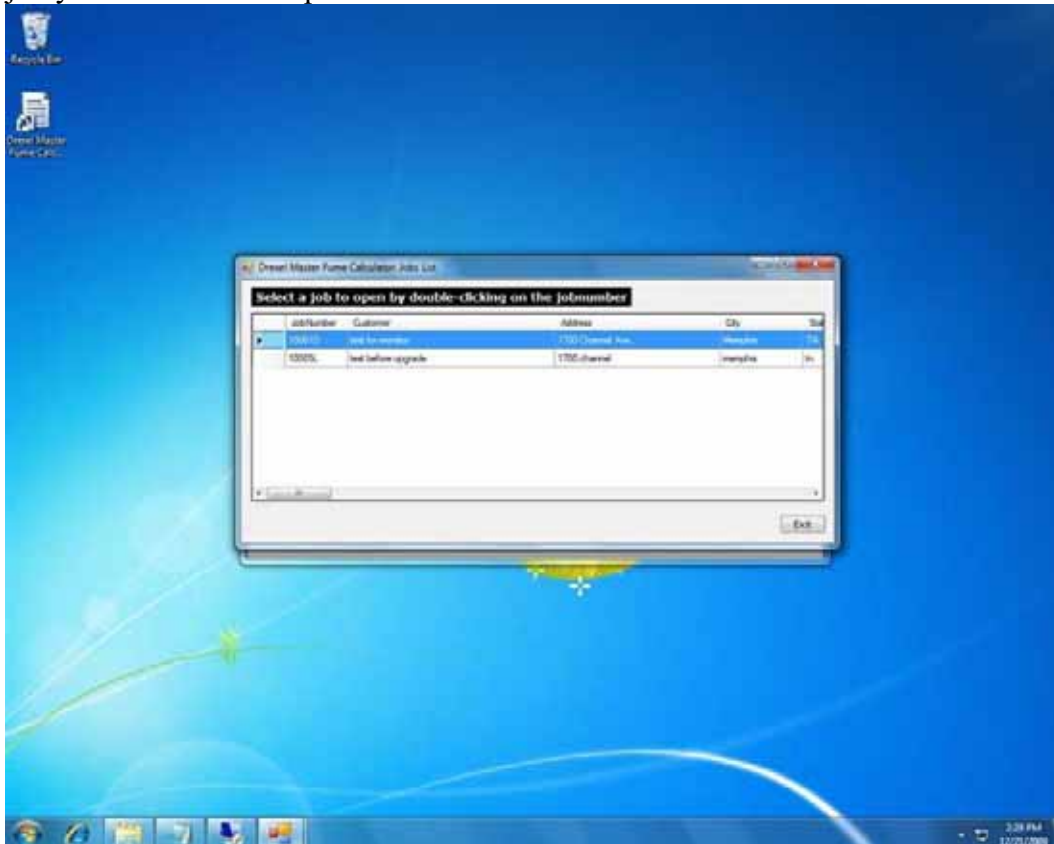


How to sync jobs from your handheld to your desktop and vice versa

Open the Master Fume Desktop Calculator by double clicking the icon on your desktop. The intro screen will be loaded. Select 'Open a Saved Job' and click 'Go'



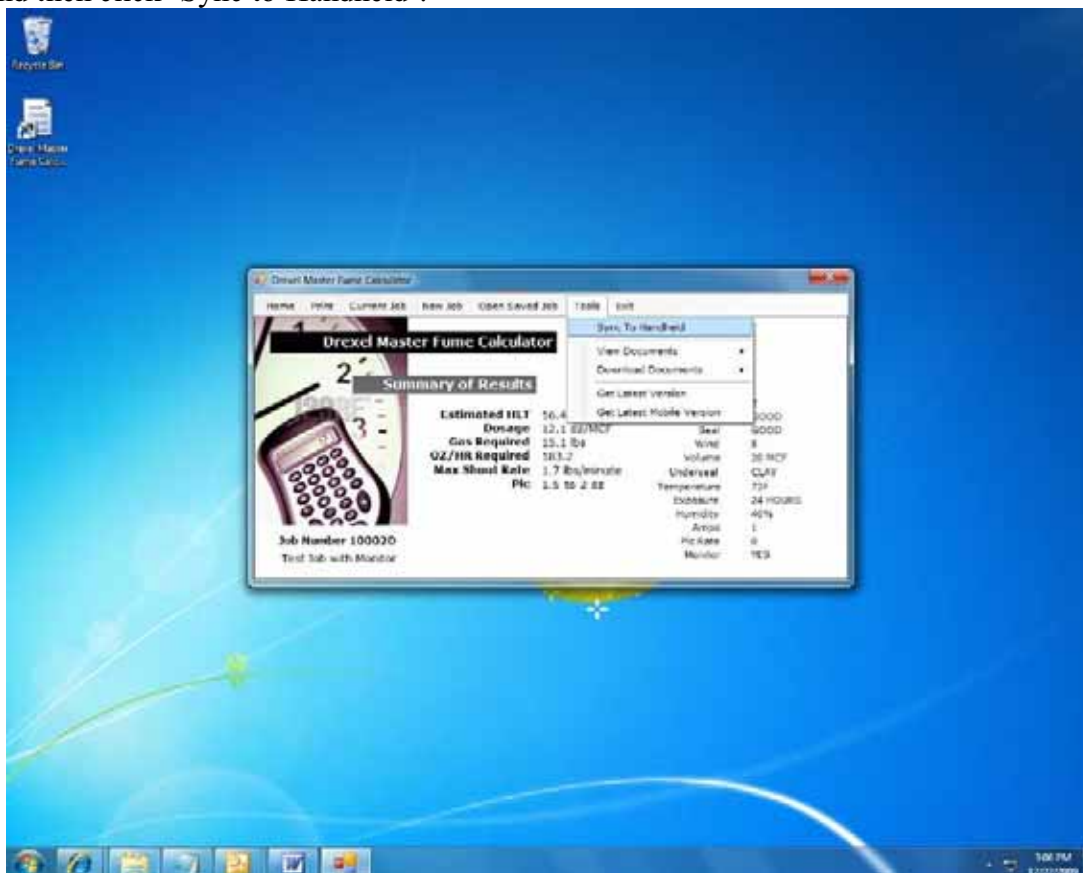
Double click the job you would like to open.



You will now be taken to that job's summary screen. Plug in your PDA/Calculator to your computer. Make sure it's connected to ActiveSync or Windows Mobile Device Center.



Click 'Tools' and then click 'Sync to Handheld'.



A few seconds later you'll see a pop up like below notifying you that the sync was successful. All jobs on the handheld and desktop will be synced to each other. You can check the synced jobs by using the 'Open Saved Jobs' option. You should see all jobs that were on your desktop's calculator and all jobs that were on your PDA's calculator. In the event the sync was unsuccessful please refer to the Master Fume Calculator Installation web page for instructions on downloading and checking connectivity ActiveSync for Windows XP and Windows Mobile Device Center for Windows Vista/7.

